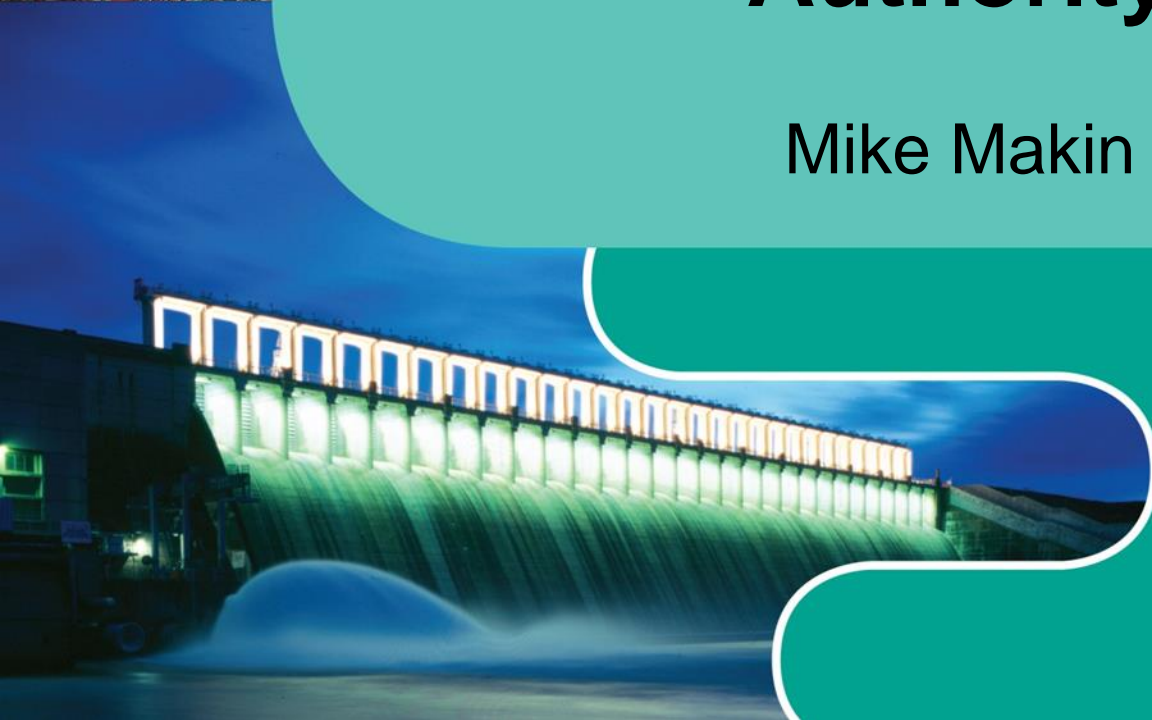


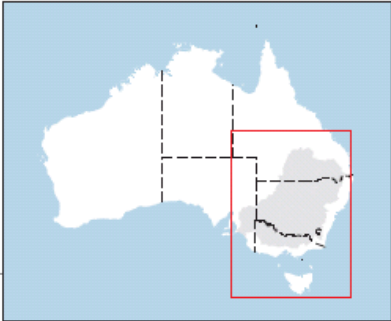
# Murray-Darling Basin Authority

Mike Makin



Australian Government





# How does the MDBA use data

- Operating a river system
- Implementing policy
- Monitoring outcomes
- Managing compliance
- Communicating with stakeholders
- Developing future policy

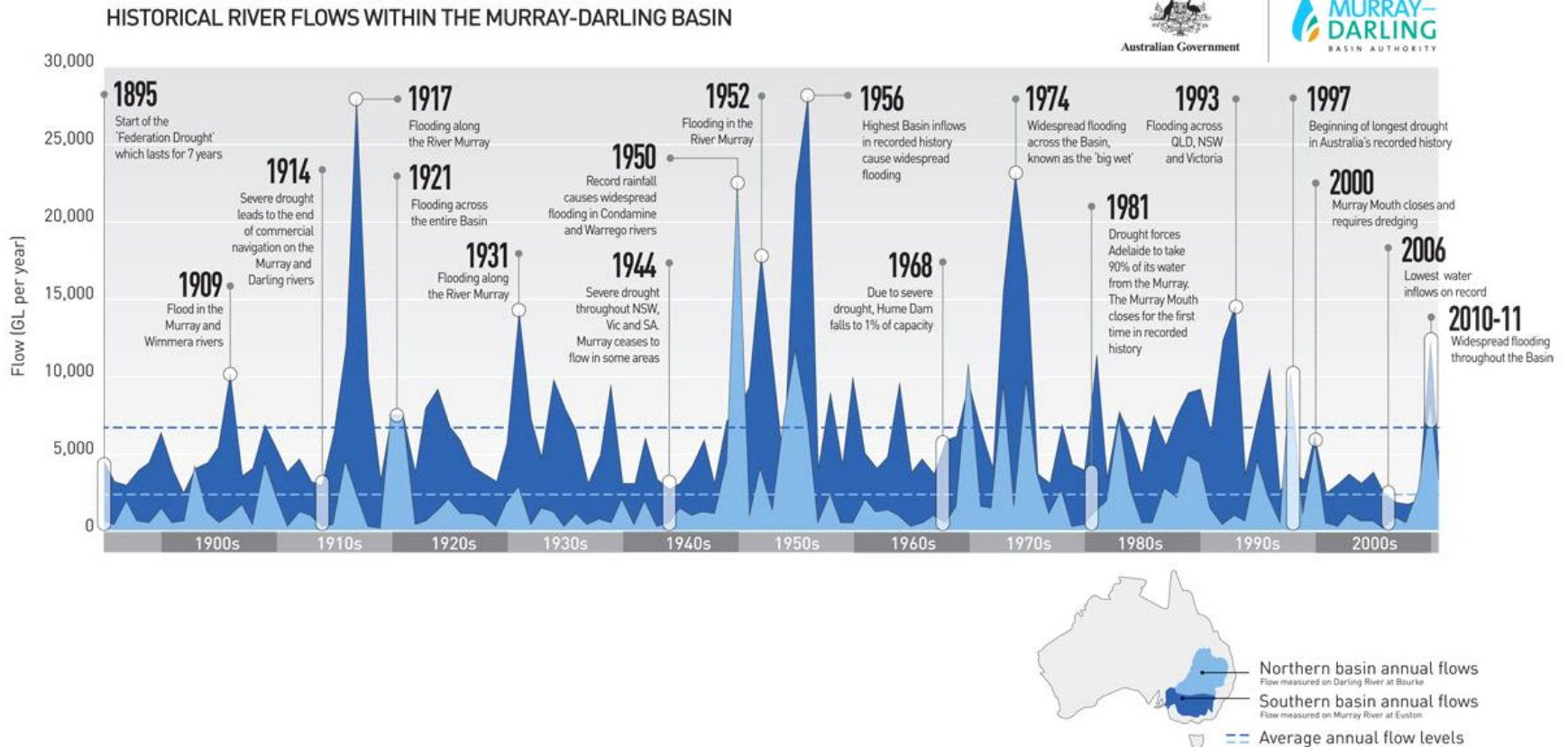


# Operating a River



# Operating a River

Day to Day operations to extreme events of drought and flood



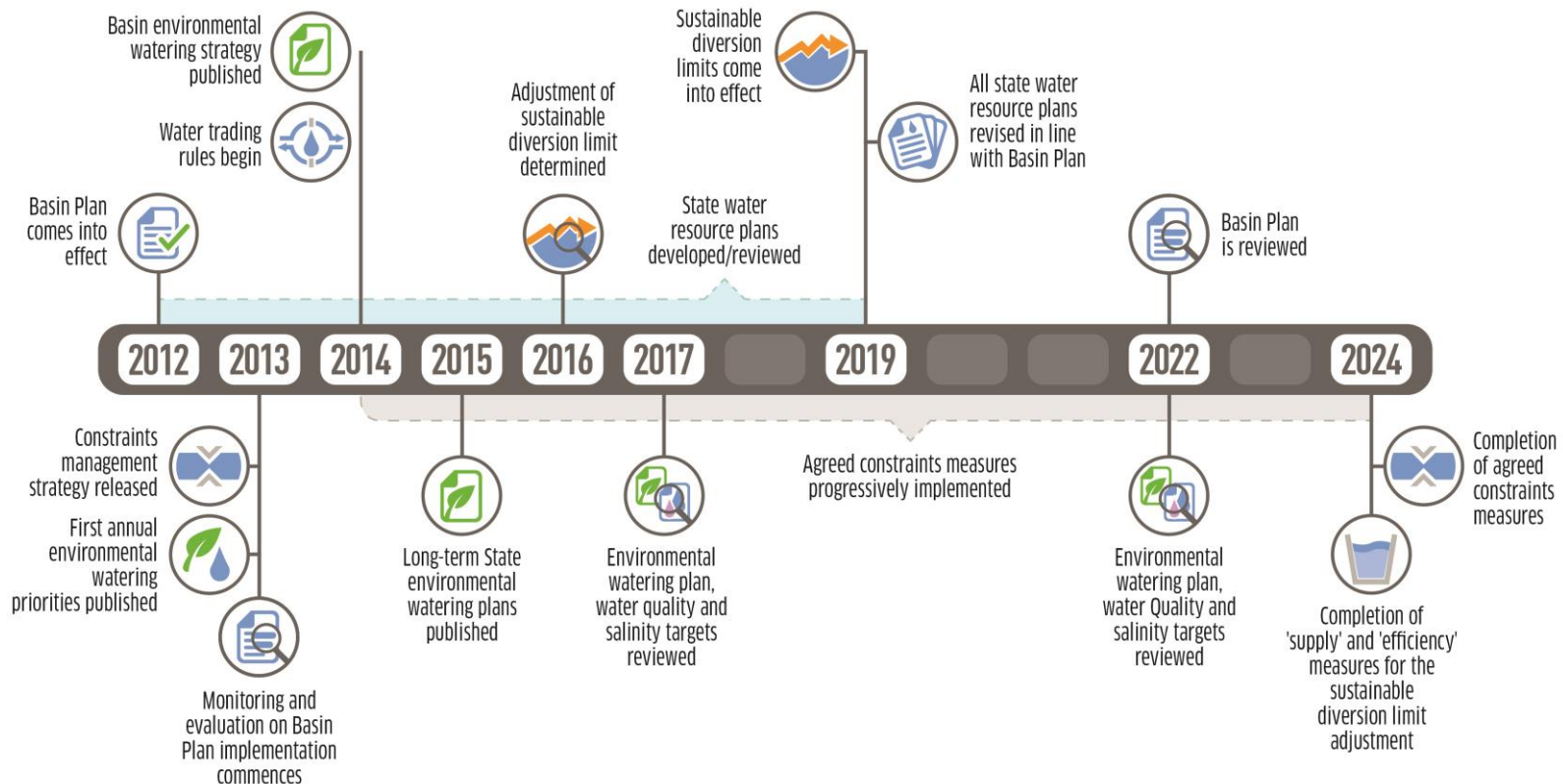


# Environmental flows



# Developing and implementing a Basin Plan

## Establishing a process of adaptive management



# Managing SDLs



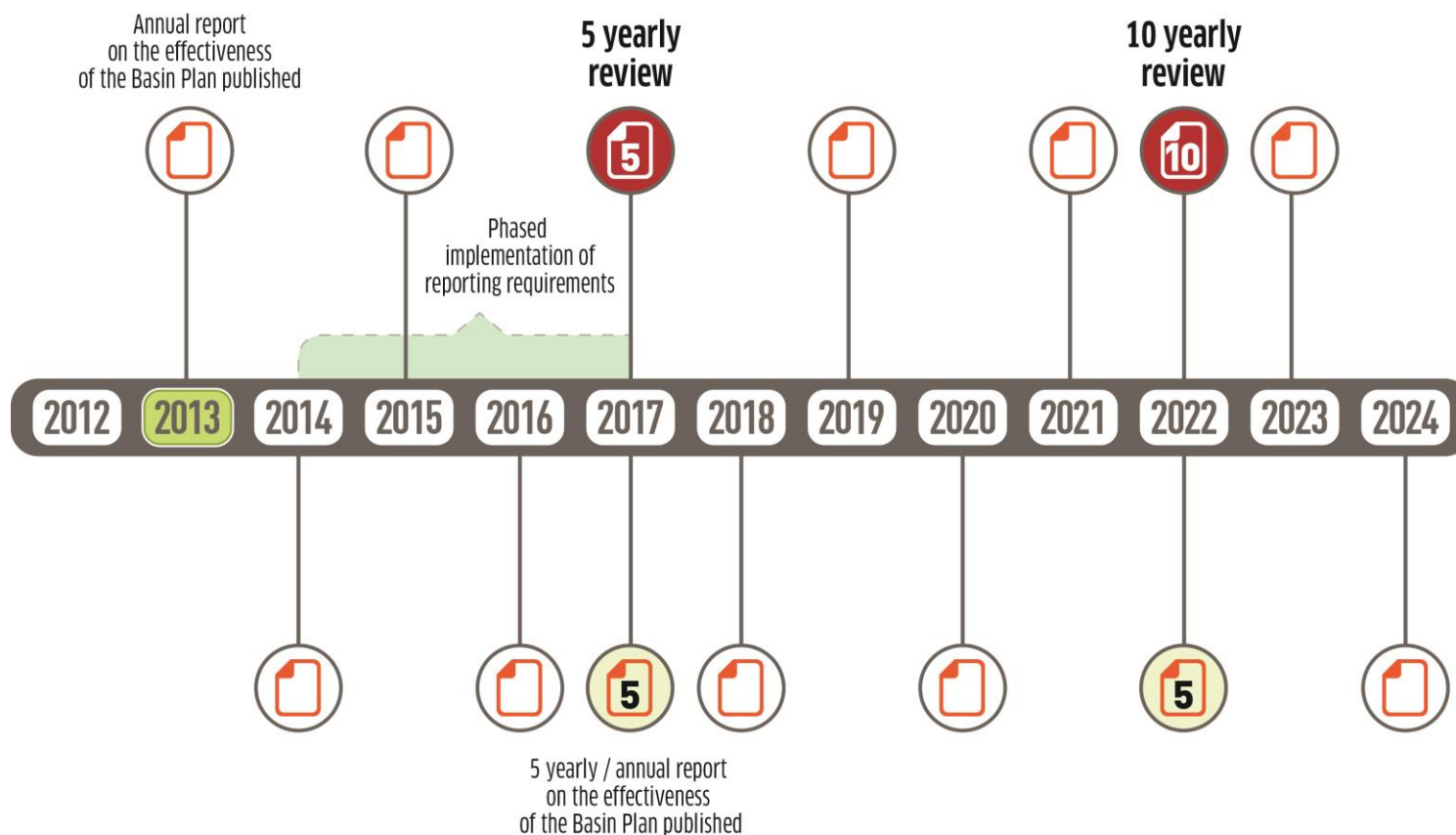


# Adjusting SDLs and constraints



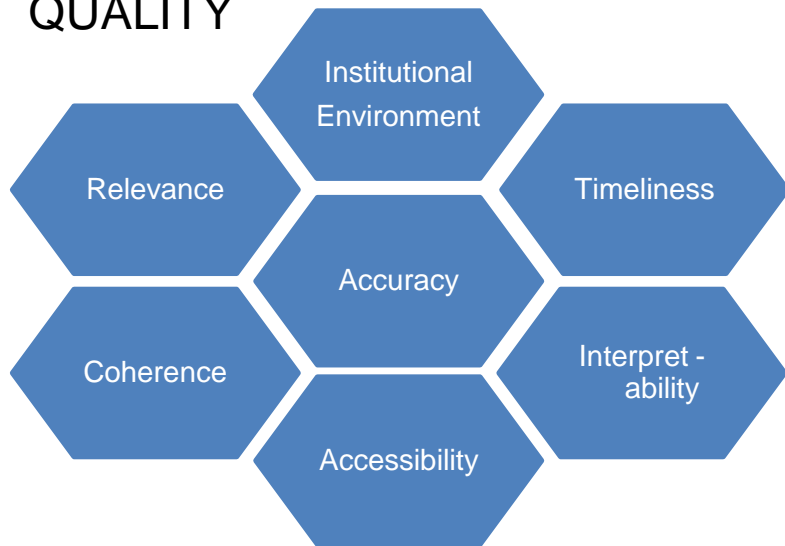
# Monitoring a Basin Plan

Establishing modelling capacity and information resources

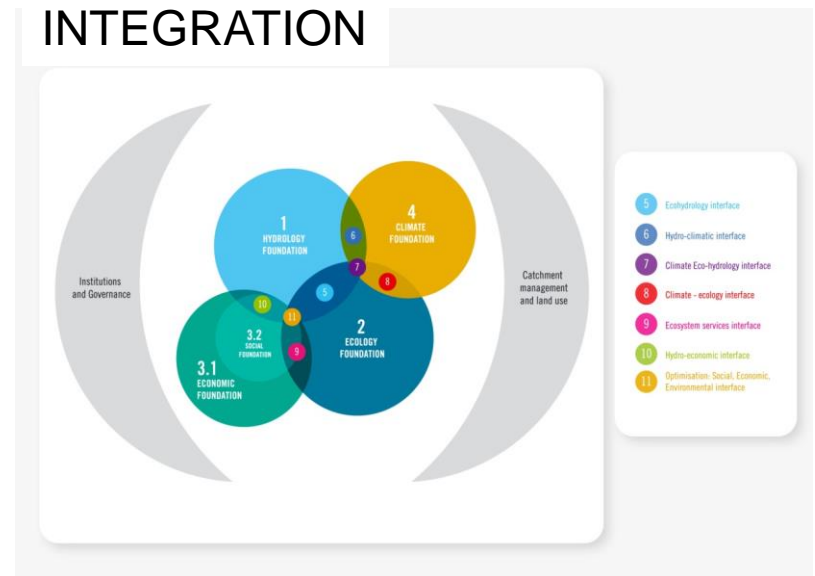


# Information that helps to manage risk

## QUALITY



## INTEGRATION



## Resolution

