



**Australian Government**  
**Bureau of Meteorology**

# The Australian Water Resources Assessment (AWRA) Modelling System Implementation Project

Getting Australia's data and model infrastructure ready for the  
future

Dr Adam Smith

29 October 2014



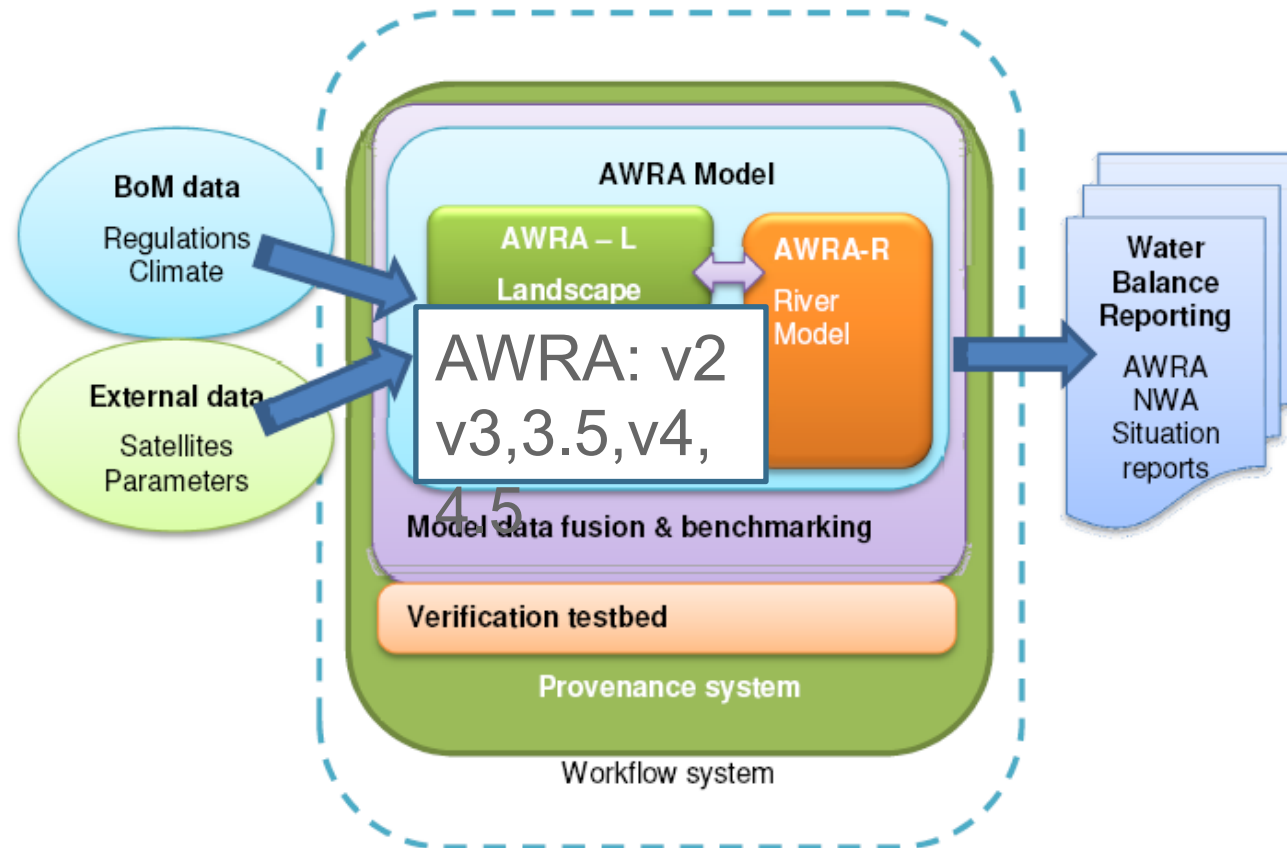
Australian Government  
Bureau of Meteorology

# Why do we need the AWRA Modelling System?

- The Australian Water Resources Assessment (AWRA) Modelling System underpins the Bureau of Meteorology water information services that are federally mandated through the Water Act (2007).
- The AWRA model has been developed for more than six years through the Water Information Research And Development Agreement (WIRADA) collaboration between the Bureau of Meteorology and the Commonwealth Scientific and Industrial Research Organisation (CSIRO).
- While a prototype AWRA Modelling System was developed through WIRADA the AWRA Modelling System has been significantly refactored and enhanced through the Bureau of Meteorology AWRA Modelling System Implementation (AWRAMSI) Project.



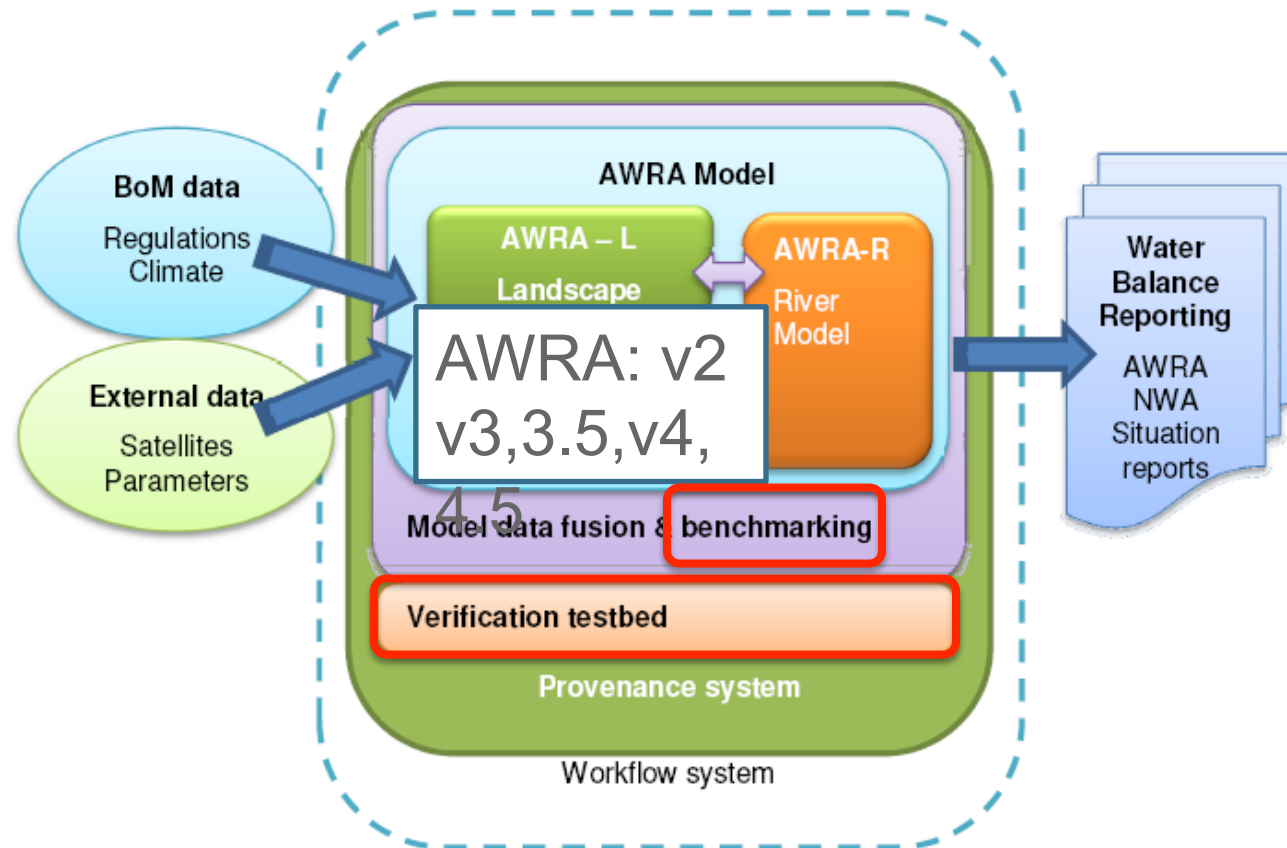
# Conceptual diagram of AWRA Modelling System (AWRAMS)



- Notes:
- \* verification testbed is an IT verification of code
  - \* model data fusion is calibration of AWRA-L and AWRA-R against observations
  - \* benchmarking is hydrological verification of performance



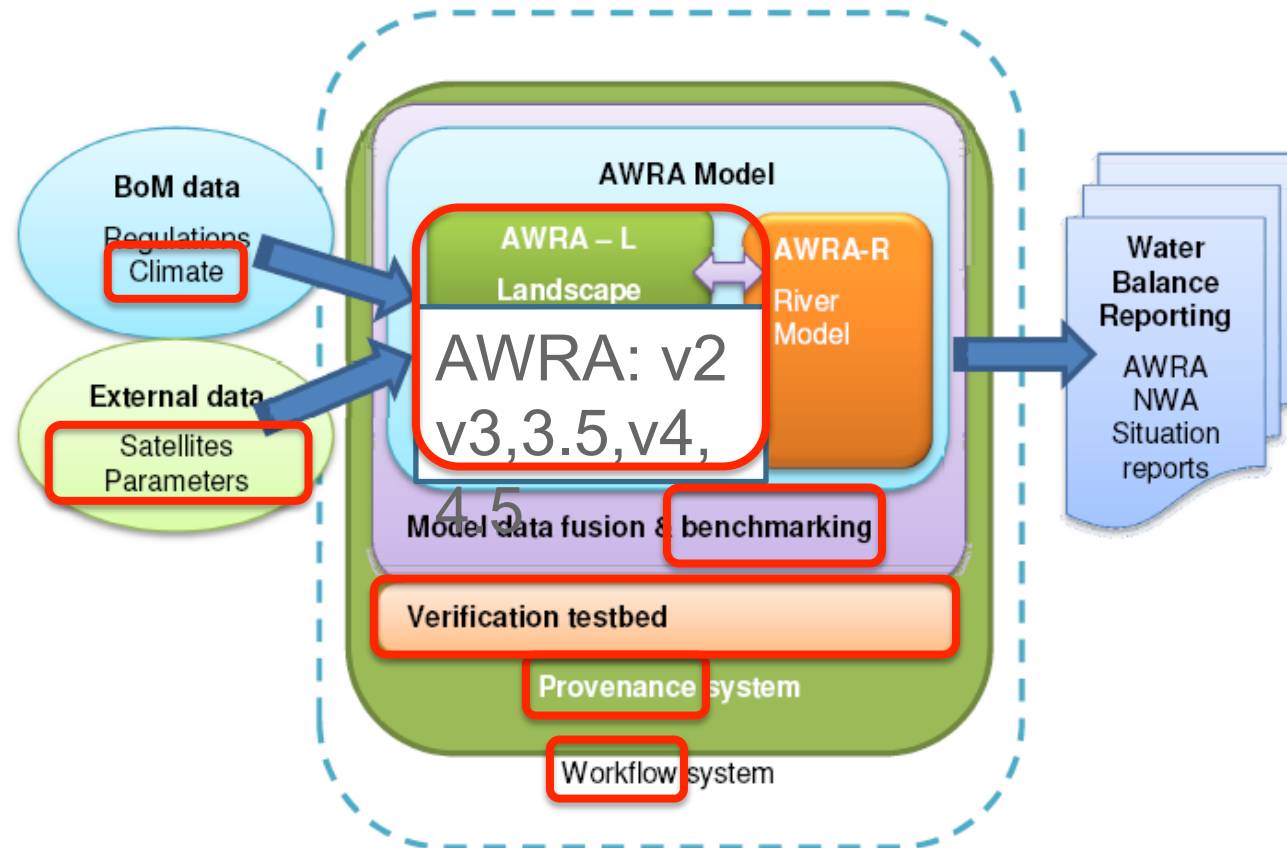
# AWRAMSI Quality Assurance – Code Verification & Hydrological Benchmarking



- Notes:
- \* verification testbed is an IT verification of code
  - \* model data fusion is calibration of AWRA-L and AWRA-R against observations
  - \* benchmarking is hydrological verification of performance



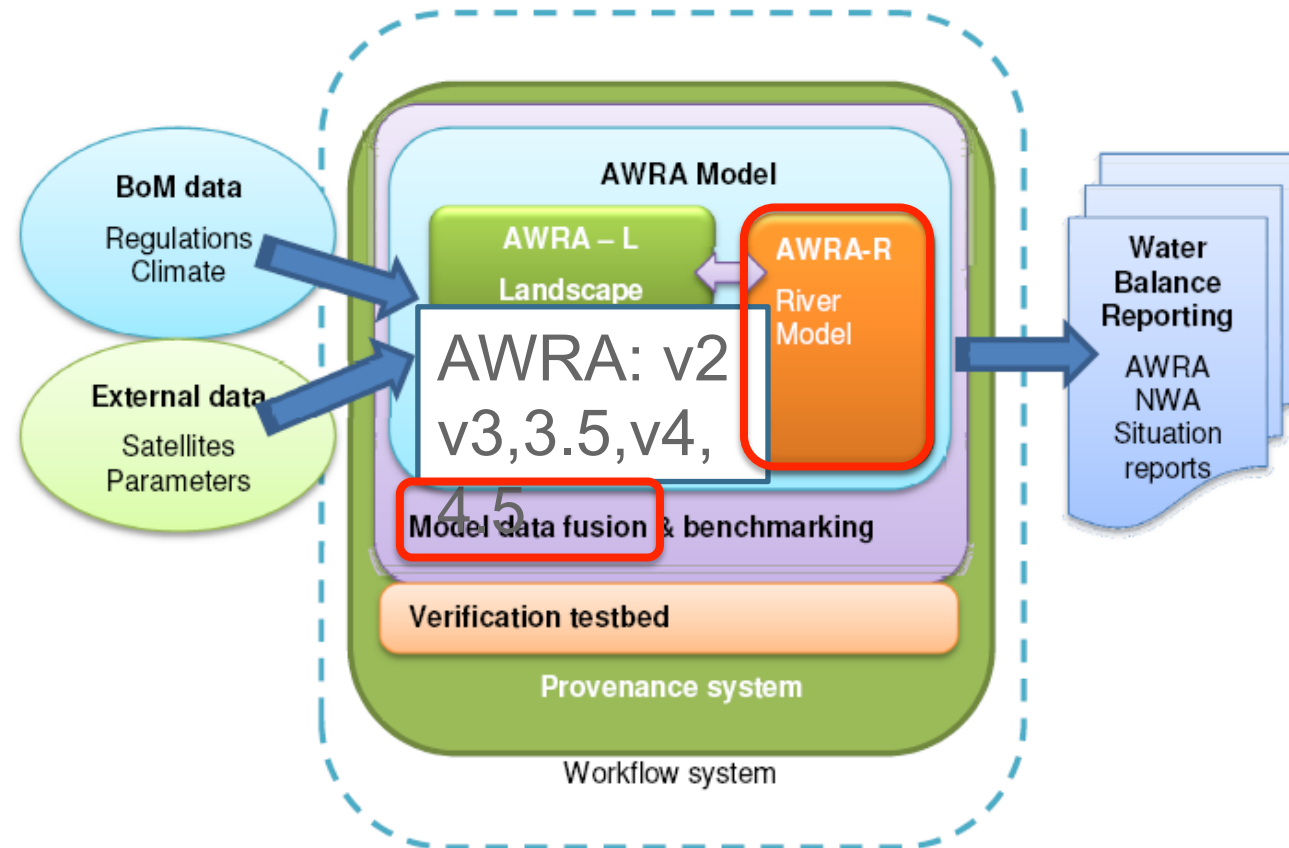
# AWRAMSI Work Complete or Nearing Completion



- Notes:
- \* verification testbed is an IT verification of code
  - \* model data fusion is calibration of AWRA-L and AWRA-R against observations
  - \* benchmarking is hydrological verification of performance



# AWRAMSI Work In Progress – Calibration and AWRA-R



- Notes:
- \* verification testbed is an IT verification of code
  - \* model data fusion is calibration of AWRA-L and AWRA-R against observations
  - \* benchmarking is hydrological verification of performance

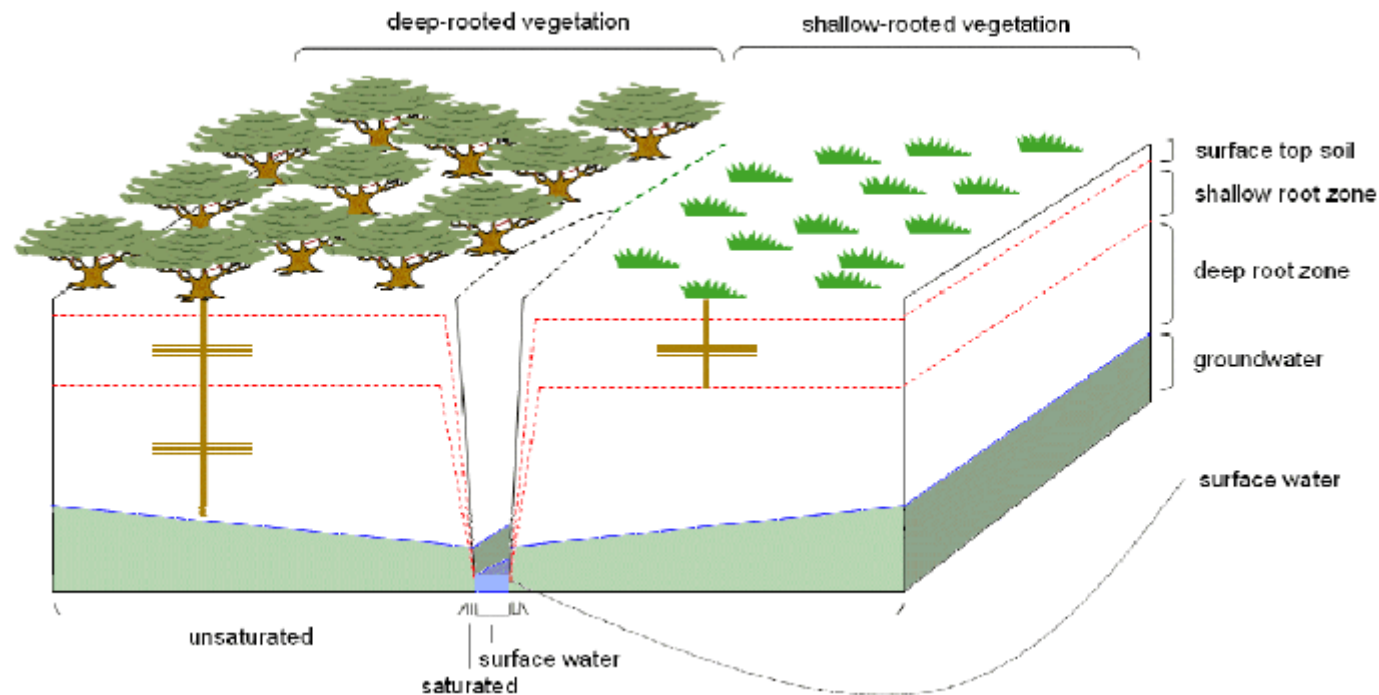


Australian Government  
Bureau of Meteorology

# AWRA-L

## The AWRA Landscape Model

- Runs for the continent on a 0.05 degree (~5 km) grid
- Runs for the period 1911 to yesterday at daily resolution
- Consists of two hydrological response units (HRUs)





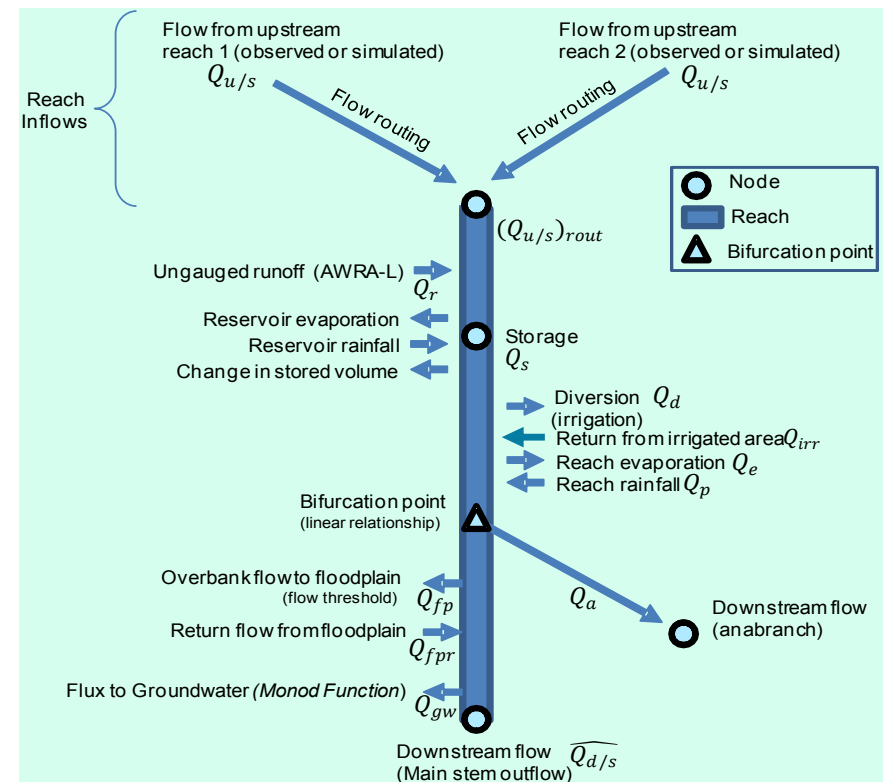
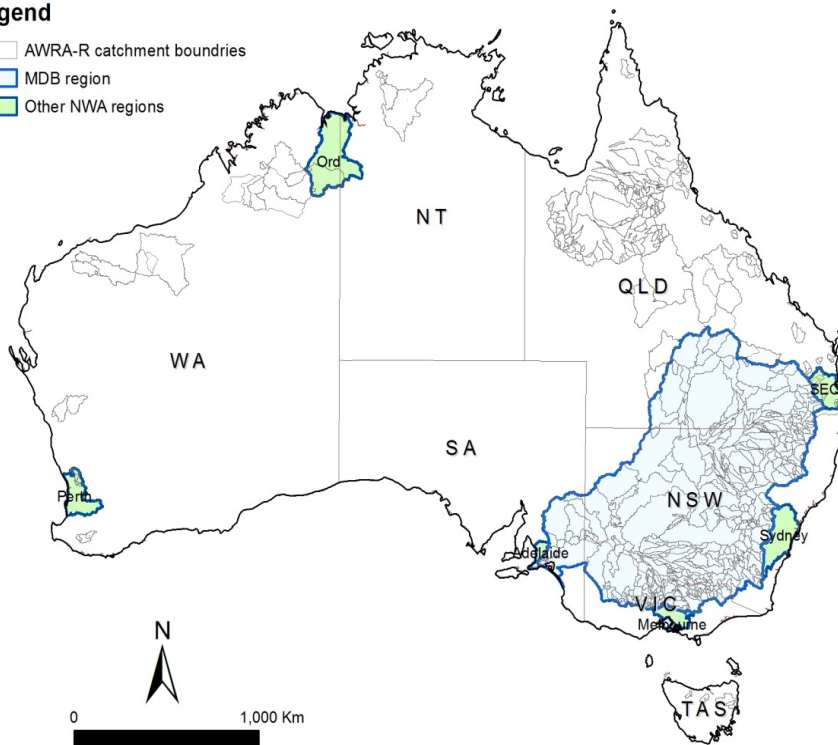
Australian Government  
Bureau of Meteorology

# AWRA-R The AWRA River Model

- Runs for river basins around capital cities and the Murray Darling Basin on a node-link network
- Runs for the period 1970 to 2013 at daily resolution

## Legend

- AWRA-R catchment boundaries
- MDB region
- Other NWA regions







# AWRA Modelling System Modes Of Operation

## 1. Interactive

- Simulation runs of AWRA-L and AWRA-R over arbitrary regions and time periods with ability to switch outputs, inputs, parameters and initial states
- Visualisation of maps and timeseries with arbitrary aggregation
- Benchmarking of AWRA-L and AWRA-R runs against observations

## 2. Scheduled Run

- Outputs generated daily for 1 January 1911 to yesterday
- Shared internally to Bureau of Meteorology via THREDDS
- Soon shared to external parties and available on NCI via RDSI
- May soon underpin a Bureau of Meteorology soil moisture website

## 3. Calibration

- Fitting AWRA-L and AWRA-R models to observations (streamflow, soil moisture and ET)



Australian Government  
Bureau of Meteorology

# AWRA Modelling System Interactive Simulation Runs

IP[y]: Notebook

BasicRun Last Checkpoint: Oct 23 14:23 (unsaved changes)

File Edit View Insert Cell Kernel Help

Code Cell Toolbar: None

```
In [ ]: import simulation
        from simulation import *
        from test_support import *
```

```
In [ ]: #inputs.default()
        inputs.fill_gaps_with.climatology()
        outputs.destination = test_output_path("_basicRunResults")
        outputs.existing_files.overwrite()
        parameters.l.default()
        parameters.spatial.default()
        states.initial.default()
        simulation.period = dt.dates("2000", "2014/10/22")
        extents.select.all()
```

```
In [ ]: simulation.run()
```



# AWRA Modelling System Interactive Simulation Runs

IP[y]: Notebook BasicRun Last Checkpoint: Oct 23 14:23 (unsaved changes)

File Edit View Insert Cell Kernel Help

Code Cell Toolbar: None

```
In [1]: import simulation
        from simulation import *
        from test_support import *

/data/cwd_awra_data/AWRAMSI/IWRM_0042_WP3/Technical/Common/awramsi/sharedvirtual/.pyenv/virtualenv/lib/python2.7/site-packages/pandas/io/excel.py:626: UserWarning: Installed openpyxl is not supported at this time
. Use >=1.6.1 and <2.0.0.
  .format(openpyxl_compat.start_ver, openpyxl_compat.stop_ver)
2014-10-27 10:45:55,005 INFO Using settings file from /home/asmith/new/awral/Config/default_user_settings.py
INFO:awrams.awra:Using settings file from /home/asmith/new/awral/Config/default_user_settings.py
2014-10-27 10:45:56,413 INFO Loading parameter set from /mnt/awramsi_test_data/ParameterSets/BestParamSet_v4.5_J.xml for AWRA-L v45
INFO:awrams.awral_helpers:Loading parameter set from /mnt/awramsi_test_data/ParameterSets/BestParamSet_v4.5_J.xml for AWRA-L v45
2014-10-27 10:45:56,475 INFO Loading parameter set from /mnt/awramsi_test_data/ParameterSets/BestParamSet_v4.5_J.xml for AWRA-L v45
INFO:awrams.awral_helpers:Loading parameter set from /mnt/awramsi_test_data/ParameterSets/BestParamSet_v4.5_J.xml for AWRA-L v45
```

```
In [ ]: #inputs.default()
        inputs.fill_gaps_with.climatology()
        outputs.destination = test_output_path("_basicRunResults")
        outputs.existing_files.overwrite()
        parameters.l.default()
        parameters.spatial.default()
        states.initial.default()
        simulation.period = dt.dates("2000", "2014/10/22")
        extents.select.all()
```

```
In [ ]: simulation.run()
```



# AWRA Modelling System Interactive Simulation Runs

IP[y]: Notebook BasicRun Last Checkpoint: Oct 23 14:23 (unsaved changes)

File Edit View Insert Cell Kernel Help

Code Cell Toolbar: None

```
In [1]: import simulation
from simulation import *
from test_support import *

/data/cwd_awra_data/AWRAMSI/IWRM_0042_WP3/Technical/Common/awramsi/sharedvirtual/.pyenv/virtualenv/lib/pyt
hon2.7/site-packages/pandas/io/excel.py:626: UserWarning: Installed openpyxl is not supported at this time
. Use >=1.6.1 and <2.0.0.
.format(openpyxl_compat.start_ver, openpyxl_compat.stop_ver)
2014-10-27 10:45:55,005 INFO Using settings file from /home/asmith/new/awral/Config/default_user_settings.
PY
INFO:awrams.awra:Using settings file from /home/asmith/new/awral/Config/default_user_settings.py
2014-10-27 10:45:56,413 INFO Loading parameter set from /mnt/awramsi_test_data/ParameterSets/BestParamSet_
v4.5_J.xml for AWRA-L v45
INFO:awrams.awral_helpers:Loading parameter set from /mnt/awramsi_test_data/ParameterSets/BestParamSet_v4.
5_J.xml for AWRA-L v45
2014-10-27 10:45:56,475 INFO Loading parameter set from /mnt/awramsi_test_data/ParameterSets/BestParamSet_
v4.5_J.xml for AWRA-L v45
INFO:awrams.awral_helpers:Loading parameter set from /mnt/awramsi_test_data/ParameterSets/BestParamSet_v4.
5_J.xml for AWRA-L v45
```

```
In [ ]: #inputs.default()
inputs.fill_gaps_with.climatology()
outputs.destination = test_output_path("_basicRunResults")
outputs.existing_files.overwrite()
outputs.existing_files.|
outputs.existing_files.append
outputs.existing_files.overwrite
```



Australian Government  
Bureau of Meteorology

# AWRA Modelling System Interactive Simulation Runs

IP[y]: Notebook

BasicRun Last Checkpoint: Oct 23 14:23 (autosaved)

File Edit View Insert Cell Kernel Help

Code Cell Toolbar: None

```
In [1]: import simulation
        from simulation import *
        from test_support import *
```

```
/data/cwd_awra_data/AWRAMSI/IWRM_0042_WP3/Technical/Common/awramsi/sharedvirtual/.pyenv/virtualenv/lib/python2.7/site-packages/pandas/io/excel.py:626: UserWarning: Installed openpyxl is not supported at this time
. Use >=1.6.1 and <2.0.0.
```

```
.format(openpyxl_compat.start_ver, openpyxl_compat.stop_ver))
```

```
2014-10-27 10:45:55,005 INFO Using settings file from /home/asmith/new/awral/Config/default_user_settings.py
```

```
INFO:awrams.awra:Using settings file from /home/asmith/new/awral/Config/default_user_settings.py
```

```
2014-10-27 10:45:56,413 INFO Loading parameter set from /mnt/awramsi_test_data/ParameterSets/BestParamSet_v4.5 J.xml for AWRA-L v45
```

```
loading parameter set from /mnt/awramsi_test_data/ParameterSets/BestParamSet_v4.
```

```
Loading parameter set from /mnt/awramsi_test_data/ParameterSets/BestParamSet_
```

```
loading parameter set from /mnt/awramsi_test_data/ParameterSets/BestParamSet_v4.
```

```
In [ ]: outputs.select.qtot_avg
        outputs.select.s0_avg
        outputs.select.s0_dr
        outputs.select.s0_sr
        outputs.select.s_avg
        outputs.select.sd_avg
        outputs.select.sd_dr
        outputs.select.sd_sr
        outputs.select.sg_bal
        outputs.select.sr_bal
        outputs.select.
```

```
ology()
output_path("_basicRunResults")
```



Australian Government  
Bureau of Meteorology

# AWRA Modelling System Interactive Simulation Runs

IP[y]: Notebook BasicRun Last Checkpoint: Oct 23 14:23 (autosaved)

File Edit View Insert Cell Kernel Help

Code Cell Toolbar: None

```
In [1]: import simulation
from simulation import *
from test_support import *
```

```
/data/cwd_awra_data/AWRAMSI/IWRM_0042_WP3/Technical/Common/awramsi/sharedvirtual/.pyenv/virtualenv/lib/python2.7/site-packages/pandas/io/excel.py:626: UserWarning: Installed openpyxl is not supported at this time
. Use >=1.6.1 and <2.0.0.
.format(openpyxl_compat.start_ver, openpyxl_compat.stop_ver)
2014-10-27 10:45:55,005 INFO Using settings file from /home/asmith/new/awral/Config/default_user_settings.PY
INFO:awrams.awra:Using settings file from /home/asmith/new/awral/Config/default_user_settings.py
2014-10-27 10:45:56,413 INFO Loading parameter set from /mnt/awramsi_test_data/ParameterSets/BestParamSet_v4.5_J.xml for AWRA-L v45
INFO:awrams.awral_helpers:Loading parameter set from /mnt/awramsi_test_data/ParameterSets/BestParamSet_v4.5_J.xml for AWRA-L v45
2014-10-27 10:45:56,475 INFO Loading parameter set from /mnt/awramsi_test_data/ParameterSets/BestParamSet_v4.5_J.xml for AWRA-L v45
INFO:awrams.awral_helpers:Loading parameter set from /mnt/awramsi_test_data/ParameterSets/BestParamSet_v4.5_J.xml for AWRA-L v45
```

```
In [ ]: #inputs.default()
inputs.fill_gaps_with.climatology()
outputs.destination = test_output_path("_basicRunResults")
outputs.existing_files.overwrite()
parameters.l.default()
parameters.
parameters.l          ult()
parameters.landscape )
parameters.s         dates("2000", "2014/10/22")
parameters.spatial
```



Australian Government  
Bureau of Meteorology

# AWRA Modelling System Interactive Simulation Runs

IP[y]: Notebook BasicRun Last Checkpoint: Oct 23 14:23 (unsaved changes)

File Edit View Insert Cell Kernel Help

Code Cell Toolbar: None

```
In [1]: import simulation
        from simulation import *
        from test_support import *

/data/cwd_awra_data/AWRAMSI/IWRM_0042_WP3/Technical/Common/awramsi/sharedvirtual/.pyenv/virtualenv/lib/pyt
hon2.7/site-packages/pandas/io/excel.py:626: UserWarning: Installed openpyxl is not supported at this time
. Use >=1.6.1 and <2.0.0.
  .format(openpyxl_compat.start_ver, openpyxl_compat.stop_ver))
2014-10-27 10:45:55,005 INFO Using settings file from /home/asmith/new/awral/Config/default_user_settings.
PY
INFO:awrams.awra:Using settings file from /home/asmith/new/awral/Config/default_user_settings.py
2014-10-27 10:45:56,413 INFO Loading parameter set from /mnt/awramsi_test_data/ParameterSets/BestParamSet_
v4.5_J.xml for AWRA-L v45
INFO:awrams.awral_helpers:Loading parameter set from /mnt/awramsi_test_data/ParameterSets/BestParamSet_v4.
5 J.xml for AWRA-L v45
parameters.l.slope coeff
parameters.l.tgrows
parameters.l.tsenc
parameters.l.ud0
parameters.l.us0
parameters.l.vc
parameters.l.w0lime
parameters.l.w0ref_alb
parameters.l.wdlimu
parameters.l.wslimu
parameters.l.

In [ ]:
        tology()
        output_path("_basicRunResults")
        write()
```



Australian Government  
Bureau of Meteorology

# AWRA Modelling System Interactive Simulation Runs

IP[y]: Notebook BasicRun Last Checkpoint: Oct 23 14:23 (autosaved)

File Edit View Insert Cell Kernel Help

Code Cell Toolbar: None

```
In [1]: import simulation
        from simulation import *
        from test_support import *

        /data/cwd_awra_data/AWRAMSI/IWRM_0042_WP3/Technical/Common/awramsi/sharedvirtual/.pyenv/virtualenv/lib/python2.7/site-packages/pandas/io/excel.py:626: UserWarning: Installed openpyxl is not supported at this time
        . Use >=1.6.1 and <2.0.0.
        .format(openpyxl_compat.start_ver, openpyxl_compat.stop_ver)
        2014-10-27 10:45:55,005 INFO Using settings file from /home/asmith/new/awral/Config/default_user_settings.py
        INFO:awrams.awra:Using settings file from /home/asmith/new/awral/Config/default_user_settings.py
        2014-10-27 10:45:56,413 INFO Loading parameter set from /mnt/awramsi_test_data/ParameterSets/BestParamSet_v4.5_J.xml for AWRA-L v45
        INFO:awrams.awral_helpers:Loading parameter set from /mnt/awramsi_test_data/ParameterSets/BestParamSet_v4.5_J.xml for AWRA-L v45
        2014-10-27 10:45:56,475 INFO Loading parameter set from /mnt/awramsi_test_data/ParameterSets/BestParamSet_v4.5_J.xml for AWRA-L v45
        INFO:awrams.awral_helpers:Loading parameter set from /mnt/awramsi_test_data/ParameterSets/BestParamSet_v4.5_J.xml for AWRA-L v45
```

```
In [ ]: #inputs.default()
        inputs.fill_gaps_with.climatology()
        outputs.destination = test_output_path("_basicRunResults")
        outputs.existing_files.overwrite()
        parameters.l.default()
        extents.select.all
        extents.select.bounds
        extents.select.catchment
        extents.select.cell
        extents.select.
```





# AWRA Modelling System Interactive Simulation Runs

IP[y]: Notebook BasicRun Last Checkpoint: Oct 23 14:23 (unsaved changes)

File Edit View Insert Cell Kernel Help

Code Cell Toolbar: None

```
In [1]: import simulation
        from simulation import *
        from test_support import *

/data/cwd_awra_data/AWRAMSI/IWRM_0042_WP3/Technical/Common/awramsi/sharedvirtual/.pyenv/virtualenv/lib/python2.7/site-packages/pandas/io/excel.py:626: UserWarning: Installed openpyxl is not supported at this time
. Use >=1.6.1 and <2.0.0.
.format(openpyxl_compat.start_ver, openpyxl_compat.stop_ver)
2014-10-27 10:45:55,005 INFO Using settings file from /home/asmith/new/awral/Config/default_user_settings.PY
INFO:awrams.awra:Using settings file from /home/asmith/new/awral/Config/default_user_settings.py
2014-10-27 10:45:56,413 INFO Loading parameter set from /mnt/awramsi_test_data/ParameterSets/BestParamSet_v4.5_J.xml for AWRA-L v45
INFO:awrams.awral_helpers:Loading parameter set from /mnt/awramsi_test_data/ParameterSets/BestParamSet_v4.5_J.xml for AWRA-L v45
2014-10-27 10:45:56,475 INFO Loading parameter set from /mnt/awramsi_test_data/ParameterSets/BestParamSet_v4.5_J.xml for AWRA-L v45
INFO:awrams.awral_helpers:Loading parameter set from /mnt/awramsi_test_data/ParameterSets/BestParamSet_v4.5_J.xml for AWRA-L v45
```

```
In [ ]: #inputs.default()
        inputs.fill_gaps_with.climatology()
        outputs.destination = test_output_path("_basicRunResults")
        outputs.existing_files.overwrite()
        parameters.l.default()
        parameters.spatial.default()
        states.initial.default()
        simulation.period = dt.dates("2000", "2014/10/22")
        extents.select.all()
        extents.select.catchment.
        extents.select.catchment.by_id
        extents.select.catchment.by_name
```

In [ ]:



# AWRA Modelling System Interactive Simulation Runs

```
IP[y]: Notebook BasicRun Last Checkpoint: Oct 23 14:23 (autosaved)
File Edit View Insert Cell Kernel Help
[Icons: Save, Add, Zoom, Copy, Paste, Up, Down, Run, Stop, Refresh] Code Cell Toolbar: None

In [1]: import simulation
        from simulation import *
        from test_support import *

/data/cwd_awra_data/AWRAMSI/IWRM_0042_WP3/Technical/Common/awramsi/sharedvirtual/.pyenv/virtualenv/lib/python2.7/site-packages/pandas/io/excel.py:626: UserWarning: Installed openpyxl is not supported at this time
. Use >=1.6.1 and <2.0.0.
.format(openpyxl_compat.start_ver, openpyxl_compat.stop_ver)
2014-10-27 10:45:55,005 INFO Using settings file from /home/asmith/new/awral/Config/default_user_settings.py
INFO:awrams.awra:Using settings file from /home/asmith/new/awral/Config/default_user_settings.py
2014-10-27 10:45:56,413 INFO Loading parameter set from /mnt/awramsi_test_data/ParameterSets/BestParamSet_v4.5_J.xml for AWRA-L v45
INFO:awrams.awral_helpers:Loading parameter set from /mnt/awramsi_test_data/ParameterSets/BestParamSet_v4.5_J.xml for AWRA-L v45
2014-10-27 10:45:56,475 INFO Loading parameter set from /mnt/awramsi_test_data/ParameterSets/BestParamSet_v4.5_J.xml for AWRA-L v45
INFO:awrams.awral_helpers:Loading parameter set from /mnt/awramsi_test_data/ParameterSets/BestParamSet_v4.5_J.xml for AWRA-L v45
extents.select.catchment.by_name.KyeambaCk_BookBook
In [ ]: extents.select.catchment.by_name.KyeambaCk_Ladysmith
        extents.select.catchment.by_name.Lachlan_Gunning
        extents.select.catchment.by_name.LaidleyCk_Mulgowie2
        extents.select.catchment.by_name.LakeAceCk_SpencersFarm
        extents.select.catchment.by_name.LakeKingCk_Gardner
        extents.select.catchment.by_name.Landsdowne_Landsdowne
        extents.select.catchment.by_name.LangLangR_LangLangHeadRd
        extents.select.catchment.by_name.LardnerCk_Gellibrand
        extents.select.catchment.by_name.Latrobe_HawthornBr
        extents.select.catchment.by_name.
```



Australian Government  
Bureau of Meteorology

# AWRA Modelling System Interactive Simulation Runs

IP[y]: Notebook BasicRun Last Checkpoint: Oct 23 14:23 (autosaved)

File Edit View Insert Cell Kernel Help

Save Add Copy Paste Undo Redo Run Stop Refresh Code Cell Toolbar: None

```
In [2]: #inputs.default()
inputs.fill_gaps_with.climatology()
outputs.destination = test_output_path("_basicRunResults")
outputs.existing_files.overwrite()
parameters.l.default()
parameters.spatial.default()
states.initial.default()
simulation.period = dt.dates("2000", "2014/10/22")
extents.select.all()
```

```
2014-10-27 11:51:20,563 INFO Loading parameter set from /mnt/awramsi_test_data/ParameterSets/BestParamSet_v4.5_J.xml for AWRA-L v45
INFO:awrams.awral_helpers:Loading parameter set from /mnt/awramsi_test_data/ParameterSets/BestParamSet_v4.5_J.xml for AWRA-L v45
2014-10-27 11:51:20,666 INFO Loading parameter set from /mnt/awramsi_test_data/ParameterSets/BestParamSet_v4.5_J.xml for AWRA-L v45
INFO:awrams.awral_helpers:Loading parameter set from /mnt/awramsi_test_data/ParameterSets/BestParamSet_v4.5_J.xml for AWRA-L v45
```

```
In [ ]: simulation.run()
```



Australian Government  
Bureau of Meteorology

# AWRA Modelling System Interactive Simulation Runs

```
IP[y]: Notebook BasicRun Last Checkpoint: Oct 23 14:23 (autosaved)
File Edit View Insert Cell Kernel Help
[Icons: Save, Add, Undo, Copy, Paste, Up, Down, Run, Stop, Refresh] Code Cell Toolbar: None
In [*]: simulation.run()
INFO:simulation_server:2014-10-27 11:54:36,320 INFO Loading climatology for all months from /data/cwd_awra_data/AWRAMSI/IWRM_0042_WP3/Technical/Climate/Climatology/Solar/Rad_1990_2009.nc
INFO:simulation_server:2014-10-27 11:54:38,242 INFO Generating MD5 summaries for Spatial Parameters
INFO:simulation_server:2014-10-27 11:54:40,045 INFO Generating MD5 summaries for temp_min_day input files
INFO:simulation_server:2014-10-27 11:54:40,963 INFO Generating MD5 summaries for solar_exposure_day input files
INFO:simulation_server:2014-10-27 11:54:41,744 INFO Generating MD5 summaries for climatology file /data/cwd_awra_data/AWRAMSI/IWRM_0042_WP3/Technical/Climate/Climatology/Solar/Rad_1990_2009.nc
INFO:simulation_server:2014-10-27 11:54:41,792 INFO Generating MD5 summaries for rain_day input files
INFO:simulation_server:2014-10-27 11:54:42,292 INFO Generating MD5 summaries for temp_max_day input files
INFO:simulation_server:2014-10-27 11:54:43,011 INFO Adding simulation provenance information to all files
INFO:simulation_server:2014-10-27 11:54:48,741 INFO Loading climate data for temp_min_day from /data/cwd_awra_data/awra_inputs/climate/tmin/tmin_*.nc
INFO:simulation_server:2014-10-27 11:54:48,746 INFO Loading climate data for solar_exposure_day from /data/cwd_awra_data/awra_inputs/climate/solar/solar_*.nc
INFO:simulation_server:2014-10-27 11:54:48,748 INFO Loading climate data for rain_day from /data/cwd_awra_data/awra_inputs/climate/rr/rr_*.nc
INFO:simulation_server:2014-10-27 11:54:48,749 INFO Loading climate data for temp_max_day from /data/cwd_awra_data/awra_inputs/climate/tmax/tmax_*.nc
INFO:simulation_server:2014-10-27 11:54:48,763 INFO Loading climatology for all months from /data/cwd_awra_data/AWRAMSI/IWRM_0042_WP3/Technical/Climate/Climatology/Solar/Rad_1990_2009.nc
```



Australian Government  
Bureau of Meteorology

# AWRA Modelling System Interactive Simulation Runs

IP[y]: Notebook

BasicRun Last Checkpoint: Oct 23 14:23 (autosaved)

File Edit View Insert Cell Kernel Help

Code Cell Toolbar: None

```
INFO:simulation_server:2014-10-27 11:54:50,782 INFO Applying climatology for solar_exposure_day from /data  
/cwd_awra_data/AWRAMSI/IWRM_0042_WP3/Technical/Climate/Climatology/Solar/Rad_1990_2009.nc
```

```
INFO:simulation_server:2014-10-27 11:54:58,781 INFO Running for period: 2000  
INFO:simulation_server:2014-10-27 11:54:58,795 INFO Running cell (12, 603) : 0.00% complete  
INFO:simulation_server:2014-10-27 11:55:03,622 INFO Running cell (50, 394) : 0.05% complete  
INFO:simulation_server:2014-10-27 11:55:05,747 INFO Running cell (62, 603) : 0.10% complete  
INFO:simulation_server:2014-10-27 11:55:08,166 INFO Running cell (75, 437) : 0.15% complete  
INFO:simulation_server:2014-10-27 11:55:10,248 INFO Running cell (85, 606) : 0.19% complete  
INFO:simulation_server:2014-10-27 11:55:12,367 INFO Running cell (94, 455) : 0.24% complete  
INFO:simulation_server:2014-10-27 11:55:14,556 INFO Running cell (102, 360) : 0.29% complete  
INFO:simulation_server:2014-10-27 11:55:16,849 INFO Running cell (109, 292) : 0.34% complete  
INFO:simulation_server:2014-10-27 11:55:18,978 INFO Running cell (115, 388) : 0.39% complete  
INFO:simulation_server:2014-10-27 11:55:21,136 INFO Running cell (121, 423) : 0.44% complete  
INFO:simulation_server:2014-10-27 11:55:23,241 INFO Running cell (127, 340) : 0.49% complete  
INFO:simulation_server:2014-10-27 11:55:25,112 INFO Running cell (132, 479) : 0.54% complete  
INFO:simulation_server:2014-10-27 11:55:27,117 INFO Running cell (137, 505) : 0.58% complete  
INFO:simulation_server:2014-10-27 11:55:29,267 INFO Running cell (142, 397) : 0.63% complete  
INFO:simulation_server:2014-10-27 11:55:31,402 INFO Running cell (147, 214) : 0.68% complete  
INFO:simulation_server:2014-10-27 11:55:33,320 INFO Running cell (151, 409) : 0.73% complete  
INFO:simulation_server:2014-10-27 11:55:35,382 INFO Running cell (155, 542) : 0.78% complete  
INFO:simulation_server:2014-10-27 11:55:37,500 INFO Running cell (159, 636) : 0.83% complete  
INFO:simulation_server:2014-10-27 11:55:39,781 INFO Running cell (164, 263) : 0.88% complete  
INFO:simulation_server:2014-10-27 11:55:41,850 INFO Running cell (168, 333) : 0.93% complete  
INFO:simulation_server:2014-10-27 11:55:43,866 INFO Running cell (172, 370) : 0.97% complete  
INFO:simulation_server:2014-10-27 11:55:45,998 INFO Running cell (176, 399) : 1.02% complete
```



# AWRA Modelling System Interactive Simulation Runs

```
IP[y]: Notebook BasicRun Last Checkpoint: Oct 23 14:23 (autosaved)
File Edit View Insert Cell Kernel Help
[Icons] Code Cell Toolbar: None
INFO:simulation_server:2014-10-27 13:18:12,978 INFO ModelRunner_2 (26443):
INFO:simulation_server:2014-10-27 13:18:12,984 INFO Total Runtime: 1h23m13.
INFO:simulation_server:2014-10-27 13:18:12,986 INFO Breakdown
INFO:simulation_server:2014-10-27 13:18:12,987 INFO run_model : 56.88
INFO:simulation_server:2014-10-27 13:18:12,988 INFO climate_input_mapping : 16.24
INFO:simulation_server:2014-10-27 13:18:12,989 INFO waiting : 11.65
INFO:simulation_server:2014-10-27 13:18:12,990 INFO other : 8.02
INFO:simulation_server:2014-10-27 13:18:12,990 INFO spatial_mapping : 6.20
INFO:simulation_server:2014-10-27 13:18:12,991 INFO initial_states : 1.00
INFO:simulation_server:2014-10-27 13:18:12,992 INFO 88.35% occupancy
INFO:simulation_server:2014-10-27 13:18:12,993 INFO OutputWriter (26440):
INFO:simulation_server:2014-10-27 13:18:12,994 INFO Total Runtime: 1h23m24.
INFO:simulation_server:2014-10-27 13:18:12,995 INFO Breakdown
INFO:simulation_server:2014-10-27 13:18:12,996 INFO waiting : 100.00
INFO:simulation_server:2014-10-27 13:18:12,996 INFO other : 0.00
INFO:simulation_server:2014-10-27 13:18:12,997 INFO 0.00% occupancy
INFO:simulation_server:2014-10-27 13:18:13,030 INFO SimulationServer (26362):
INFO:simulation_server:2014-10-27 13:18:13,033 INFO Total Runtime: 1h23m37.
INFO:simulation_server:2014-10-27 13:18:13,035 INFO Breakdown
INFO:simulation_server:2014-10-27 13:18:13,036 INFO waiting : 74.82
INFO:simulation_server:2014-10-27 13:18:13,037 INFO retrieve_inputs : 14.07
INFO:simulation_server:2014-10-27 13:18:13,041 INFO other : 10.82
INFO:simulation_server:2014-10-27 13:18:13,043 INFO provenance : 0.14
INFO:simulation_server:2014-10-27 13:18:13,045 INFO setup : 0.11
INFO:simulation_server:2014-10-27 13:18:13,047 INFO terminate_workers : 0.04
INFO:simulation_server:2014-10-27 13:18:13,047 INFO create_files : 0.00
INFO:simulation_server:2014-10-27 13:18:13,048 INFO 25.18% occupancy
INFO:simulation_server:2014-10-27 13:18:13,049 INFO 823.66 cell years/second
INFO:simulation_server:2014-10-27 13:18:13,049 INFO Finished simulation
{'message': 'sim_server_terminated'}
```



Australian Government  
Bureau of Meteorology

# AWRA Modelling System Interactive Visualisation

IP[y]: Notebook

Visualisation Last Checkpoint: Oct 23 14:19 (autosaved)

File Edit View Insert Cell Kernel Help

Code Cell Toolbar: None

```
In [1]: from Simulation import results
        from Visualisation import vis
        from test_support import *

        import Interaction.datetools as dt
        from Interaction import extents
        from Interaction.catchments import CatchmentDB

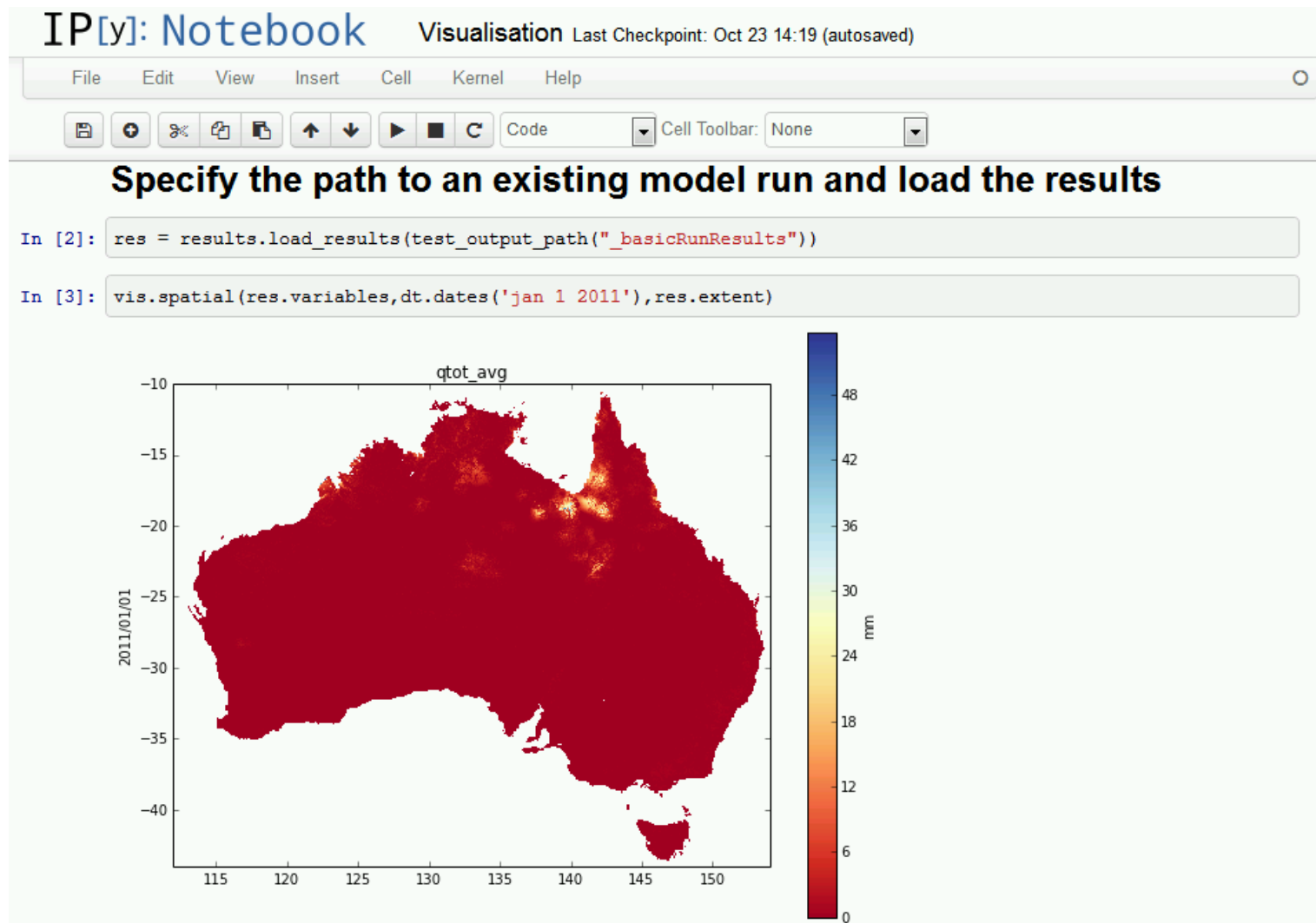
        catchments = CatchmentDB()

/data/cwd_awra_data/AWRAMSI/IWRM_0042_WP3/Technical/Common/awramsi/sharedvirtual/.pyenv/venv/lib/python2.7/site-packages/pandas/io/excel.py:626: UserWarning: Installed openpyxl is not supported at this time
. Use >=1.6.1 and <2.0.0.
.format(openpyxl_compat.start_ver, openpyxl_compat.stop_ver))
2014-10-25 08:08:03,773 INFO Using settings file from /home/asmith/new/awral/Config/default_user_settings.py
INFO:awrams.awra:Using settings file from /home/asmith/new/awral/Config/default_user_settings.py
2014-10-25 08:08:05,565 INFO Loading parameter set from /mnt/awramsi_test_data/ParameterSets/BestParamSet_v4.02.xml for AWRA-L v4
INFO:awrams.awral_helpers:Loading parameter set from /mnt/awramsi_test_data/ParameterSets/BestParamSet_v4.02.xml for AWRA-L v4
```



Australian Government  
Bureau of Meteorology

# AWRA Modelling System Interactive Visualisation

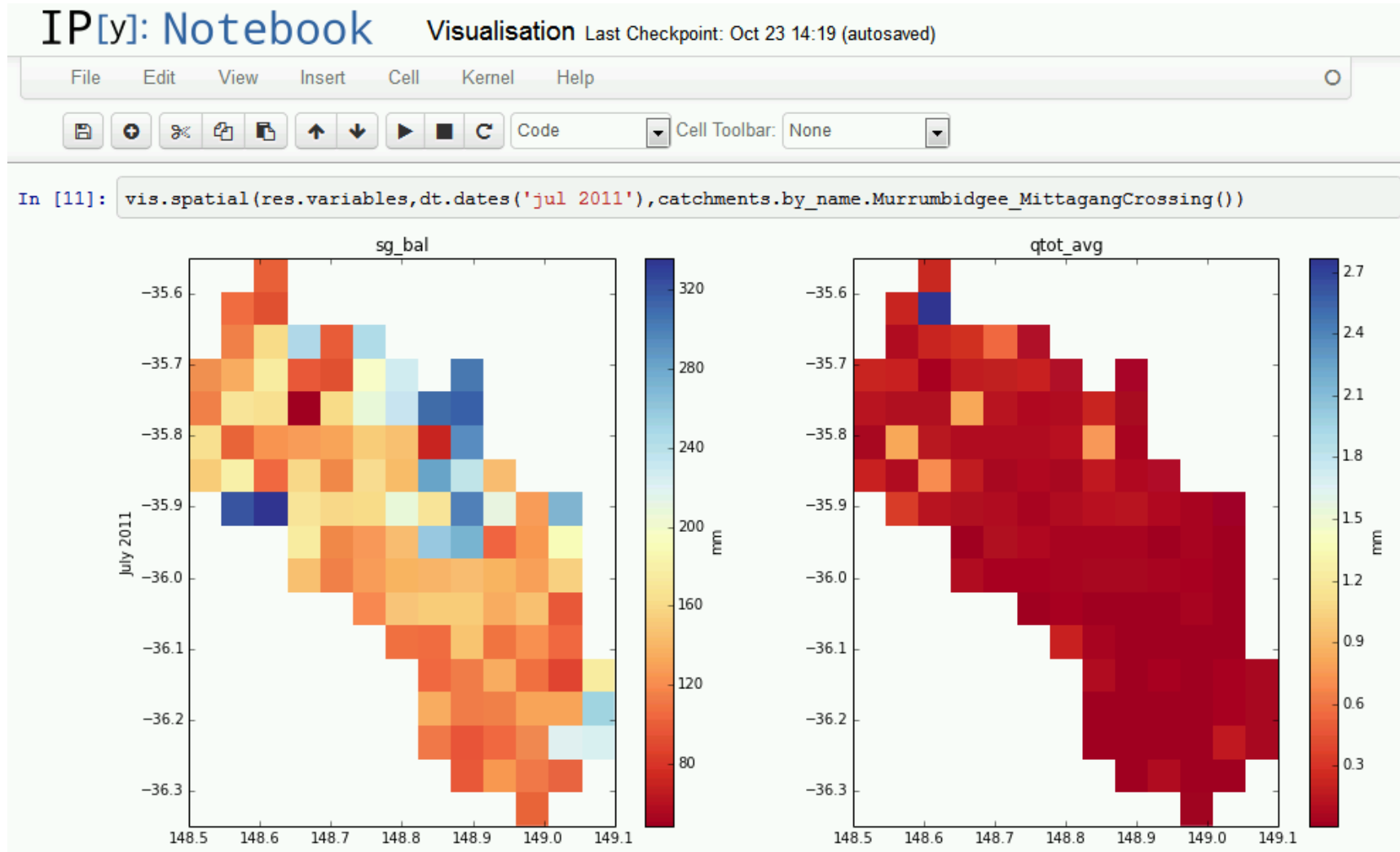






Australian Government  
Bureau of Meteorology

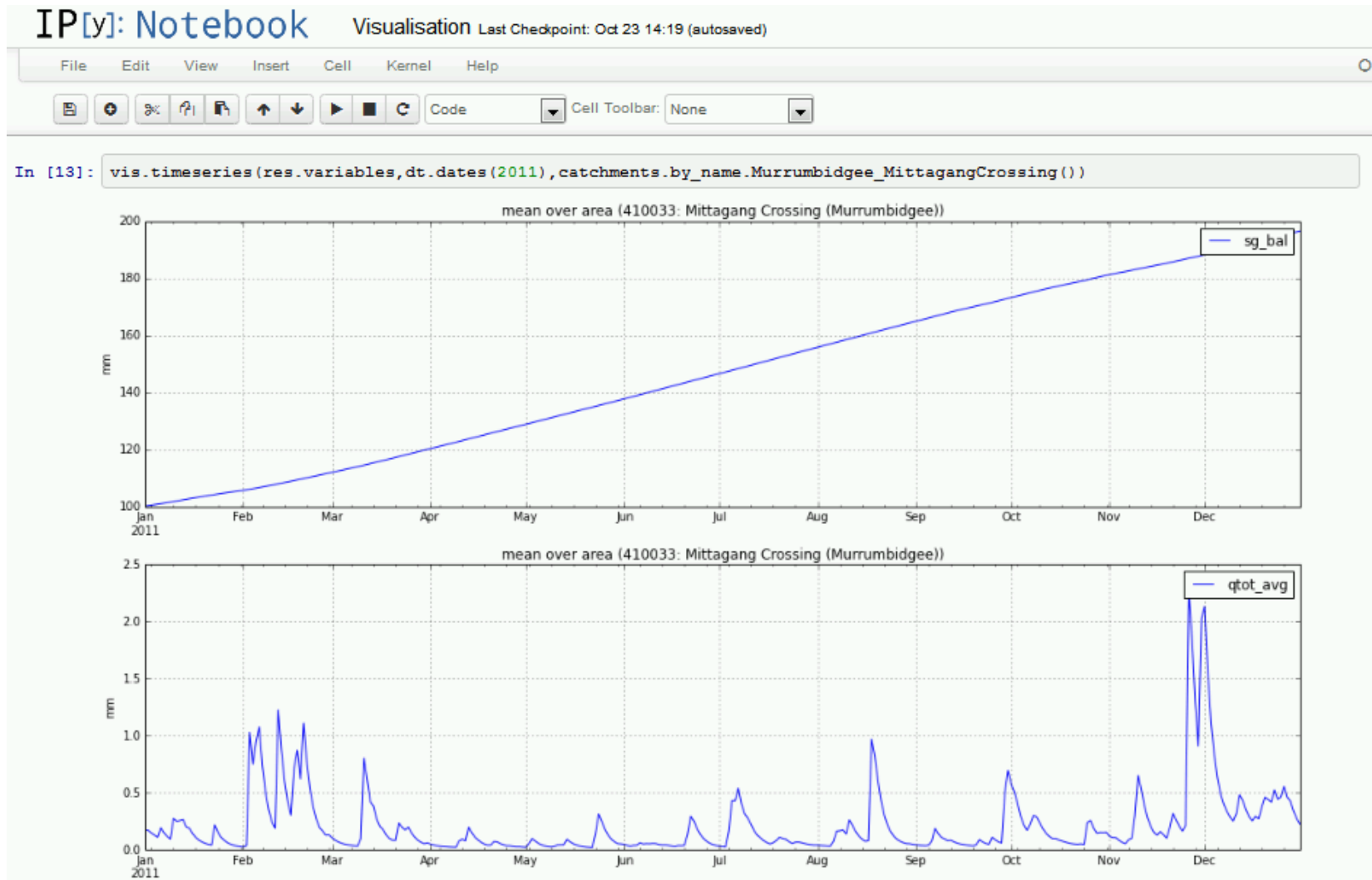
# AWRA Modelling System Interactive Visualisation





Australian Government  
Bureau of Meteorology

# AWRA Modelling System Interactive Visualisation





# AWRA Modelling System Interactive Benchmarking

## IP[y]: Notebook

Notebooks Running Clusters

To import a notebook, drag the file onto the listing below or [click here](#).

New Notebook

/ UserAcceptance /

..	
ASCAT_Extraction.ipynb	Delete
BenchmarkingDemo.ipynb	Shutdown
BenchmarkingDemo_CMRS_ET.ipynb	Delete
BenchmarkingDemo_Dd.ipynb	Delete
BenchmarkingDemo_OzFlux_ET.ipynb	Delete
BenchmarkingDemo_QObs.ipynb	Delete
BenchmarkingDemo_SM_OZNET.ipynb	Delete
BenchmarkingDemo_SM_SASMAS.ipynb	Delete
BenchmarkingDemo_wunsat_AMSRE.ipynb	Delete
CMRSET_Extraction.ipynb	Delete
Extraction.ipynb	Delete
FTree_Derivation.ipynb	Delete
OzFlux_Extraction.ipynb	Delete
OzNetConversion.ipynb	Delete
ProfiledRun.ipynb	Delete
SASMASConversion.ipynb	Delete
Visualisation.ipynb	Delete



# AWRA Modelling System Interactive Benchmarking

IP[y]: Notebook    BenchmarkingDemo (autosaved)

File   Edit   View   Insert   Cell   Kernel   Help

Markdown   Cell Toolbar: None

## Demonstrates benchmarking functionality

```
In [1]: from Processing.benchmarking import *
        from test_support import test_input_path

2014-08-14 02:33:48,267 INFO Using settings file from /home/dshipman/GIT/awral/Config/dshipman.py
/data/cwd_awra_data/AWRAMSII/IWRM_0042_WP3/Technical/Common/awramsi/sharedvirtual/.pyenv/virtualenv/lib/python2.7/site-packages/pandas
/io/excel.py:626: UserWarning: Installed openpyxl is not supported at this time. Use >=1.6.1 and <2.0.0.
.format(openpyxl_compat.start_ver, openpyxl_compat.stop_ver)
2014-08-14 02:33:48,267 INFO Using settings file from /home/dshipman/GIT/awral/Config/dshipman.py
INFO:awrams.awra:Using settings file from /home/dshipman/GIT/awral/Config/dshipman.py
2014-08-14 02:33:49,419 INFO Loading parameter set from /mnt/awramsi_test_data/ParameterSets/BestParamSet_v4.02.xml for AWRA-L v4
2014-08-14 02:33:49,419 INFO Loading parameter set from /mnt/awramsi_test_data/ParameterSets/BestParamSet_v4.02.xml for AWRA-L v4
INFO:awrams.awral_helpers:Loading parameter set from /mnt/awramsi_test_data/ParameterSets/BestParamSet_v4.02.xml for AWRA-L v4
```

### Set up required input data

The benchmarking suite takes Pandas DataFrame objects as input (using dates as an index, and columns labelled with site names)

```
In [2]: oznet_data_fn = test_input_path("benchmarking/oznet/s0.csv")
        model_outputs_path = "/data/cdc_cwd_wra/awra/wra_share_01/Benchmarking/Model_Outputs/"

        _SITE_IDX = '/data/cdc_cwd_wra/awra/wra_share_01/Post_Processors/Aggregator/SiteLocationsWithIndex.csv'

        oznet_df = pd.DataFrame.from_csv(oznet_data_fn)

        site_idx = pd.DataFrame.from_csv(_SITE_IDX)

        comparison_sites = oznet_df.columns

        set_name = 'Oznet Soilmoisture'

        awra355s0_df = pd.DataFrame.from_csv(os.path.join(model_outputs_path, 'AWRA3.5_griddedsims/AWRA_v3.5.5_L_S0_Allsites.csv'))
        awra20_s0_df = pd.DataFrame.from_csv(os.path.join(model_outputs_path, 'AWRA2.0_griddedsims/AWRA_v2.0_S0_Allsites.csv'))
        a355_comp = extract_sites_wirada(awra355s0_df, oznet_df.columns, set_name, site_idx)
        a2_comp = extract_sites_wirada(awra20_s0_df, oznet_df.columns, set_name, site_idx)

/data/cwd_awra_data/AWRAMSII/IWRM_0042_WP3/Technical/Common/awramsi/sharedvirtual/.pyenv/virtualenv/lib/python2.7/site-packages/pandas
/core/frame.py:1712: UserWarning: Boolean Series key will be reindexed to match DataFrame index.
"DataFrame index.", UserWarning)
```

### Set up comparison

The basic object for generated benchmarking states is the 'ComparisonSet'

```
In [3]: cs = ComparisonSet(oznet_df, 'OzNet', 'S0', dt.datetime(2002, 2010))
```



# AWRA Modelling System Interactive Benchmarking

IP[y]: Notebook BenchmarkingDemo (autosaved)

File Edit View Insert Cell Kernel Help

Markdown Cell Toolbar: None

### Add models

Any number of models can be simultaneously compared

```
In [4]: cs.add_model(a355_comp, 'AWRAv355')
cs.add_model(a2_comp, 'AWRAv20')
```

`/data/cwd_awra_data/AWRAMS/IRRM_0042_WP3/Technical/Common/awrams/sharedvirtual/.pyenv/virtualenv/lib/python2.7/site-packages/pandas/computation/expressions.py:184: UserWarning: evaluating in Python space because the '+' operator is not supported by numexpr for the bool dtype, use '|' instead`  
`unsupported[op_str]}`

### View some statistics

Summary percentiles can be printed out by specifying a statistic to the 'stat\_percentiles' function  
The timeframe defaults to monthly, but can be specified

```
In [5]: cs.stat_percentiles('bias')
```

```
Out[5]:
```

	0%	5%	25%	Median	75%	95%	100%
AWRAv355	-10.672695	-7.626217	-4.741206	-3.430496	-0.633385	1.123612	2.921998
AWRAv20	-1.255768	1.427128	3.874239	4.762280	6.849103	9.735465	10.047411

```
In [6]: cs.stat_percentiles('nse', 'daily')
```

```
Out[6]:
```

	0%	5%	25%	Median	75%	95%	100%
AWRAv355	-3.228327	-1.139456	-0.106757	0.126331	0.518142	0.698423	0.769616
AWRAv20	-19.371571	-11.472690	-2.091684	-0.595401	0.066074	0.507756	0.693793

Percentiles for the data can also be viewed

```
In [7]: cs.data_percentiles()
```

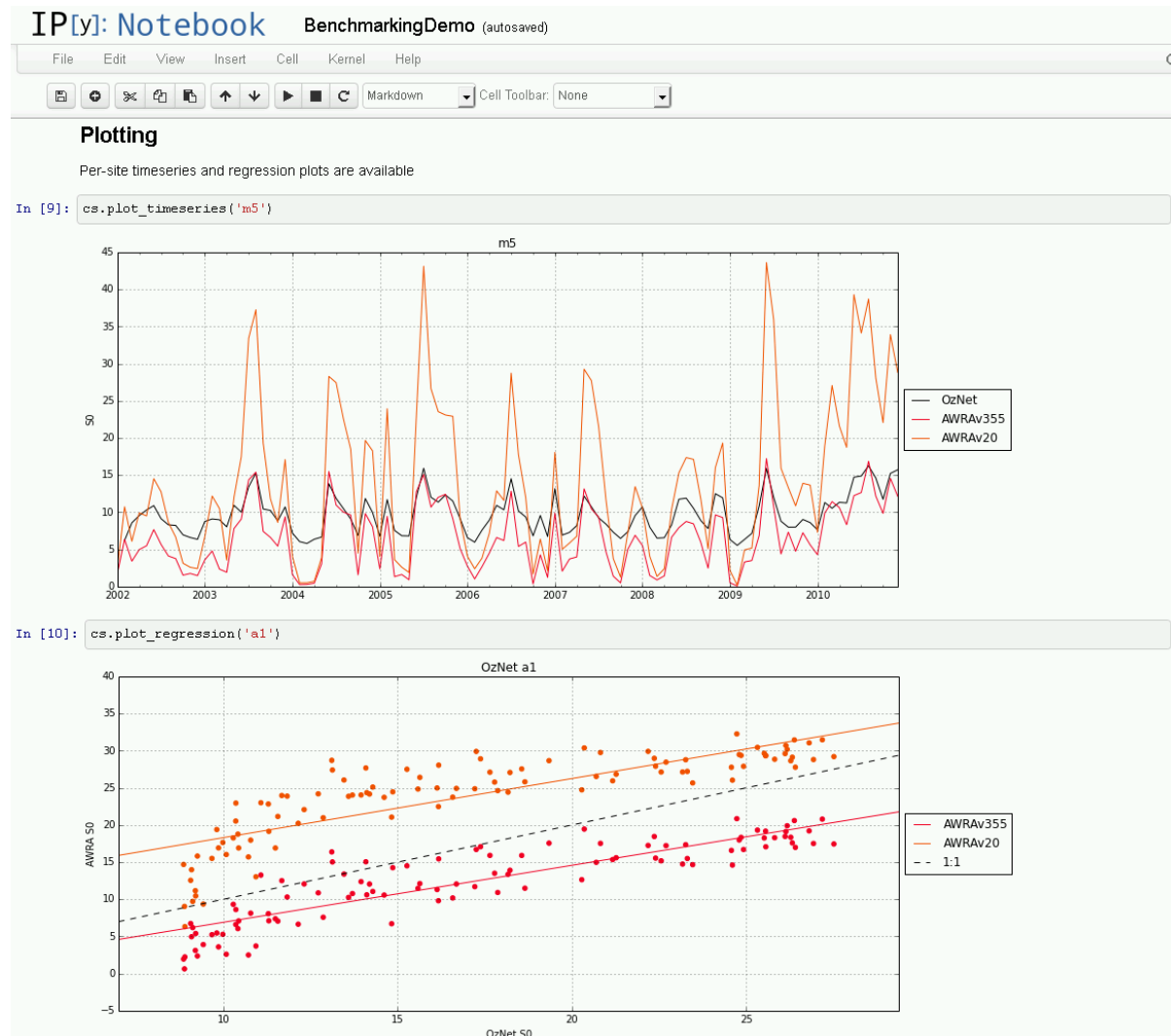
```
Out[7]:
```

	0%	5%	25%	Median	75%	95%	100%
OzNet	-99.900000	3.353296	7.992827	11.624304	16.790151	26.993152	49.519885
AWRAv355	0.062084	1.281254	4.844398	9.444264	14.057304	17.797211	20.960334
AWRAv20	0.117300	2.368452	8.626343	17.493994	26.151869	38.018642	47.069807



Australian Government  
Bureau of Meteorology

# AWRA Modelling System Interactive Benchmarking





# AWRA Modelling System Interactive Benchmarking





Australian Government  
Bureau of Meteorology

# AWRAMSI Software Development Principles

- Integrated Modelling Environment (IPython Notebook)
- Agile (test driven) development
- PRINCE2 project management
- Open source technology stack
  - Predominantly Python
  - Fortran (for AWRA-L grid cell)
  - C (for AWRA-R river reach)
  - Git version control
  - Gnu compiler with Linux OS





# Software Version Control – Git Commits

[git://murray.bom.gov.au](#) / [awral.git](#) / shortlog +++ git

[summary](#) | [shortlog](#) | [log](#) | [commit](#) | [commitdiff](#) | [tree](#) commit  search:   re

first · prev · next

**awral.git**

4 hours ago	<a href="#">joel</a>	Added port forwarding to vagrant config <span style="color: green;">master</span>	<a href="#">commit</a>   <a href="#">commitdiff</a>   <a href="#">tree</a>   <a href="#">snapshot</a>
4 hours ago	<a href="#">joel</a>	Updated config for vagrant	<a href="#">commit</a>   <a href="#">commitdiff</a>   <a href="#">tree</a>   <a href="#">snapshot</a>
4 hours ago	<a href="#">joel</a>	Basic config file for Vagrant	<a href="#">commit</a>   <a href="#">commitdiff</a>   <a href="#">tree</a>   <a href="#">snapshot</a>
5 hours ago	<a href="#">Douglas Leng</a>	AWRAMSI-499: Record scheduled run finish time, incase...	<a href="#">commit</a>   <a href="#">commitdiff</a>   <a href="#">tree</a>   <a href="#">snapshot</a>
6 hours ago	<a href="#">joel</a>	Vagrant update hostname	<a href="#">commit</a>   <a href="#">commitdiff</a>   <a href="#">tree</a>   <a href="#">snapshot</a>
6 hours ago	<a href="#">joel</a>	Updates to vagrant provisioning to build shareable box	<a href="#">commit</a>   <a href="#">commitdiff</a>   <a href="#">tree</a>   <a href="#">snapshot</a>
7 hours ago	<a href="#">David Shipman</a>	More jenkins attempts...	<a href="#">commit</a>   <a href="#">commitdiff</a>   <a href="#">tree</a>   <a href="#">snapshot</a>
7 hours ago	<a href="#">David Shipman</a>	Again	<a href="#">commit</a>   <a href="#">commitdiff</a>   <a href="#">tree</a>   <a href="#">snapshot</a>
9 hours ago	<a href="#">David Shipman</a>	Merge branch 'master' of ssh://murray.bom.gov.au/awral	<a href="#">commit</a>   <a href="#">commitdiff</a>   <a href="#">tree</a>   <a href="#">snapshot</a>
9 hours ago	<a href="#">David Shipman</a>	Try again...	<a href="#">commit</a>   <a href="#">commitdiff</a>   <a href="#">tree</a>   <a href="#">snapshot</a>
9 hours ago	<a href="#">Stuart Baron-Hay</a>	Merge branch 'master' of ssh://murray.bom.gov.au/awral	<a href="#">commit</a>   <a href="#">commitdiff</a>   <a href="#">tree</a>   <a href="#">snapshot</a>
9 hours ago	<a href="#">Stuart Baron-Hay</a>	AWRAMSI-136 tidy-up and notebook updates	<a href="#">commit</a>   <a href="#">commitdiff</a>   <a href="#">tree</a>   <a href="#">snapshot</a>
9 hours ago	<a href="#">David Shipman</a>	Fix logging propogation	<a href="#">commit</a>   <a href="#">commitdiff</a>   <a href="#">tree</a>   <a href="#">snapshot</a>
10 hours ago	<a href="#">David Shipman</a>	Support non-notebook logger tests	<a href="#">commit</a>   <a href="#">commitdiff</a>   <a href="#">tree</a>   <a href="#">snapshot</a>
10 hours ago	<a href="#">David Shipman</a>	Another logging/test fix attempt	<a href="#">commit</a>   <a href="#">commitdiff</a>   <a href="#">tree</a>   <a href="#">snapshot</a>
2 days ago	<a href="#">joel</a>	Fix virtualenv activation in vagrant provisioning	<a href="#">commit</a>   <a href="#">commitdiff</a>   <a href="#">tree</a>   <a href="#">snapshot</a>
3 days ago	<a href="#">joel</a>	Update for build script to make ATLAS detection for...	<a href="#">commit</a>   <a href="#">commitdiff</a>   <a href="#">tree</a>   <a href="#">snapshot</a>
3 days ago	<a href="#">David Shipman</a>	Merge branch 'master' of ssh://murray.bom.gov.au/awral	<a href="#">commit</a>   <a href="#">commitdiff</a>   <a href="#">tree</a>   <a href="#">snapshot</a>
3 days ago	<a href="#">David Shipman</a>	Another attempt	<a href="#">commit</a>   <a href="#">commitdiff</a>   <a href="#">tree</a>   <a href="#">snapshot</a>
3 days ago	<a href="#">joel</a>	Vagrant setup now activates virtualenv on startup	<a href="#">commit</a>   <a href="#">commitdiff</a>   <a href="#">tree</a>   <a href="#">snapshot</a>
3 days ago	<a href="#">joel</a>	Build scripts updated to work with Vagrant / clean VMs	<a href="#">commit</a>   <a href="#">commitdiff</a>   <a href="#">tree</a>   <a href="#">snapshot</a>
3 days ago	<a href="#">joel</a>	Changed build script to use /mnt/awramsi_test_data...	<a href="#">commit</a>   <a href="#">commitdiff</a>   <a href="#">tree</a>   <a href="#">snapshot</a>
3 days ago	<a href="#">joel</a>	Make ATLAS build conditional on not finding it. To...	<a href="#">commit</a>   <a href="#">commitdiff</a>   <a href="#">tree</a>   <a href="#">snapshot</a>
3 days ago	<a href="#">joel</a>	First cut Vagrant configuration including reworking...	<a href="#">commit</a>   <a href="#">commitdiff</a>   <a href="#">tree</a>   <a href="#">snapshot</a>
3 days ago	<a href="#">David Shipman</a>	Merge branch 'master' of ssh://murray.bom.gov.au/awral	<a href="#">commit</a>   <a href="#">commitdiff</a>   <a href="#">tree</a>   <a href="#">snapshot</a>
3 days ago	<a href="#">David Shipman</a>	Another logging fix attempt...	<a href="#">commit</a>   <a href="#">commitdiff</a>   <a href="#">tree</a>   <a href="#">snapshot</a>
3 days ago	<a href="#">Max Monahan</a>	AWRAMSI-407: Implement multi-variable multi-period...	<a href="#">commit</a>   <a href="#">commitdiff</a>   <a href="#">tree</a>   <a href="#">snapshot</a>



# Software Version Control – Git Commits

4 days ago	David Shipman	Missed a spot...	<a href="#">commit</a>   <a href="#">commitdiff</a>   <a href="#">tree</a>   <a href="#">snapshot</a>
4 days ago	David Shipman	Refactored test logging	<a href="#">commit</a>   <a href="#">commitdiff</a>   <a href="#">tree</a>   <a href="#">snapshot</a>
4 days ago	David Shipman	Testing jenkins fix	<a href="#">commit</a>   <a href="#">commitdiff</a>   <a href="#">tree</a>   <a href="#">snapshot</a>
4 days ago	David Shipman	Typo in simulation	<a href="#">commit</a>   <a href="#">commitdiff</a>   <a href="#">tree</a>   <a href="#">snapshot</a>
4 days ago	David Shipman	Merge branch 'master' of ssh://murray.bom.gov.au/awral	<a href="#">commit</a>   <a href="#">commitdiff</a>   <a href="#">tree</a>   <a href="#">snapshot</a>
4 days ago	David Shipman	Revert subprocess32 change (temp jenkins tests)	<a href="#">commit</a>   <a href="#">commitdiff</a>   <a href="#">tree</a>   <a href="#">snapshot</a>
4 days ago	Stuart Baron-Hay	Merge branch 'master' of ssh://murray.bom.gov.au/awral	<a href="#">commit</a>   <a href="#">commitdiff</a>   <a href="#">tree</a>   <a href="#">snapshot</a>
4 days ago	Stuart Baron-Hay	scheduled run updates	<a href="#">commit</a>   <a href="#">commitdiff</a>   <a href="#">tree</a>   <a href="#">snapshot</a>
4 days ago	Stuart Baron-Hay	AWRAMSI-473 added notebook for CMRSET derivation	<a href="#">commit</a>   <a href="#">commitdiff</a>   <a href="#">tree</a>   <a href="#">snapshot</a>
4 days ago	Stuart Baron-Hay	AWRAMSI-136 added Dd benchmarking notebook	<a href="#">commit</a>   <a href="#">commitdiff</a>   <a href="#">tree</a>   <a href="#">snapshot</a>
4 days ago	David Shipman	Attempting to fix broken FD bug	<a href="#">commit</a>   <a href="#">commitdiff</a>   <a href="#">tree</a>   <a href="#">snapshot</a>
4 days ago	David Shipman	Visualistion notebook demo	<a href="#">commit</a>   <a href="#">commitdiff</a>   <a href="#">tree</a>   <a href="#">snapshot</a>
4 days ago	David Shipman	Merge branch 'master' of ssh://murray.bom.gov.au/awral	<a href="#">commit</a>   <a href="#">commitdiff</a>   <a href="#">tree</a>   <a href="#">snapshot</a>
4 days ago	David Shipman	Adding subprocess32 to dependencies (attempted jenkins...	<a href="#">commit</a>   <a href="#">commitdiff</a>   <a href="#">tree</a>   <a href="#">snapshot</a>
4 days ago	Robert Pipunic	AWRAMSI-463: Not sure if I need to commit/push 'Calibra...	<a href="#">commit</a>   <a href="#">commitdiff</a>   <a href="#">tree</a>   <a href="#">snapshot</a>
4 days ago	Robert Pipunic	AWRAMSI-463: Updates of modules for testing AWRAMSI...	<a href="#">commit</a>   <a href="#">commitdiff</a>   <a href="#">tree</a>   <a href="#">snapshot</a>
4 days ago	David Shipman	Attempt to fix leaky file descriptors bug	<a href="#">commit</a>   <a href="#">commitdiff</a>   <a href="#">tree</a>   <a href="#">snapshot</a>
5 days ago	David Shipman	Trying to solve nosetests segfault	<a href="#">commit</a>   <a href="#">commitdiff</a>   <a href="#">tree</a>   <a href="#">snapshot</a>
5 days ago	David Shipman	Logging/hanging fixes, updated tests	<a href="#">commit</a>   <a href="#">commitdiff</a>   <a href="#">tree</a>   <a href="#">snapshot</a>
5 days ago	David Shipman	Removed giant files...	<a href="#">commit</a>   <a href="#">commitdiff</a>   <a href="#">tree</a>   <a href="#">snapshot</a>
5 days ago	David Shipman	Merge branch 'master' of ssh://murray.bom.gov.au/awral	<a href="#">commit</a>   <a href="#">commitdiff</a>   <a href="#">tree</a>   <a href="#">snapshot</a>
5 days ago	David Shipman	Improve logging on exceptions, fix potential hang condition	<a href="#">commit</a>   <a href="#">commitdiff</a>   <a href="#">tree</a>   <a href="#">snapshot</a>
5 days ago	Robert Pipunic	AWRAMSI-463: Updating all cal. work (pathnames in code...	<a href="#">commit</a>   <a href="#">commitdiff</a>   <a href="#">tree</a>   <a href="#">snapshot</a>
5 days ago	Robert Pipunic	Merge branch 'master' of ssh://murray.bom.gov.au/awral	<a href="#">commit</a>   <a href="#">commitdiff</a>   <a href="#">tree</a>   <a href="#">snapshot</a>
5 days ago	Robert Pipunic	AWRAMSI-463: Minor alteration take 2... removed for...	<a href="#">commit</a>   <a href="#">commitdiff</a>   <a href="#">tree</a>   <a href="#">snapshot</a>
5 days ago	David Shipman	Typo bugfix...	<a href="#">commit</a>   <a href="#">commitdiff</a>   <a href="#">tree</a>   <a href="#">snapshot</a>
5 days ago	David Shipman	Fixing ack for row_complete	<a href="#">commit</a>   <a href="#">commitdiff</a>   <a href="#">tree</a>   <a href="#">snapshot</a>
5 days ago	David Shipman	Deleting troublesome acceptance test	<a href="#">commit</a>   <a href="#">commitdiff</a>   <a href="#">tree</a>   <a href="#">snapshot</a>
6 days ago	Robert Pipunic	Merge branch 'master' of ssh://murray.bom.gov.au/awral	<a href="#">commit</a>   <a href="#">commitdiff</a>   <a href="#">tree</a>   <a href="#">snapshot</a>
6 days ago	Robert Pipunic	AWRAMSI-463: Minor refactoring... removed some for...	<a href="#">commit</a>   <a href="#">commitdiff</a>   <a href="#">tree</a>   <a href="#">snapshot</a>
6 days ago	David Shipman	Fixing unit test	<a href="#">commit</a>   <a href="#">commitdiff</a>   <a href="#">tree</a>   <a href="#">snapshot</a>
6 days ago	David Shipman	Merge branch 'master' of ssh://murray.bom.gov.au/awral	<a href="#">commit</a>   <a href="#">commitdiff</a>   <a href="#">tree</a>   <a href="#">snapshot</a>
6 days ago	David Shipman	AWRAMSI-464: Readers only open on demand	<a href="#">commit</a>   <a href="#">commitdiff</a>   <a href="#">tree</a>   <a href="#">snapshot</a>
7 days ago	Robert Pipunic	AWRAMSI-463: Update to calibration modules - 'run_cal_t...	<a href="#">commit</a>   <a href="#">commitdiff</a>   <a href="#">tree</a>   <a href="#">snapshot</a>



# Test Driven Development – Continuous Integration

**Jenkins** search  [log in](#)

Jenkins > AWRAMSI [ENABLE AUTO REFRESH](#)

AWRAMSI Build Pipeline (0-Dependencies, 1-Main Software w Unit Tests, 2-Longer running acceptance tests) AWRAMSI Project Home Page wiki: <http://wiki/foswiki/ClimateAndWater/AWRAMSI> JIRA SCRUM <https://cwg-jira.bom.gov.au/jira/browse/AWRAMSI>

A2PI **AWRAMSI** AWRIS Air Quality Dashboard All Climate EI Explorer ETL Environment FFW Dashboard Geofabric IFD IMS IPBA NEII NGIS NWA 2 Water Common Water Restr

S	W	Name ↓	Last Success	Last Failure	Last Duration	Cron Trigger
		<a href="#">awramsi_0_build_dependencies</a>	12 hr (#278)	5 days 5 hr (#272)	1 hr 8 min	Build periodically: 15 2 * * *
		<a href="#">awramsi_0_Python3_Build_Dependencies</a>	20 days (#50)	1 mo 3 days (#37)	49 min	Build periodically: 15 3 * * *
		<a href="#">awramsi_1_dev_build_and_test</a>	10 hr (#1510)	5 days 4 hr (#1480)	5 min 13 sec	Poll SCM: * * * * *
		<a href="#">awramsi_2_acceptance_tests_short_round</a>	22 hr (#814)	4 hr 24 min (#819)	24 min	
		<a href="#">awramsi_3_deployment</a>	22 hr (#141)	4 mo 4 days (#29)	15 sec	
		<a href="#">awramsi_4_build_virtual_py27_env</a>	6 mo 6 days (#3)	6 mo 6 days (#1)	26 min	
		<a href="#">awramsi_aim_sdcvd-awrap01</a>	4 mo 3 days (#3)	N/A	1.5 sec	
		<a href="#">awramsi_intel_0_build_dependencies</a>	10 hr (#106)	6 days 5 hr (#99)	1 hr 5 min	Build periodically: 15 4 * * *
		<a href="#">awramsi_intel_1_build_models</a>	8 hr 54 min (#677)	N/A	5 min 34 sec	Poll SCM: * * * * *
		<a href="#">awramsi_intel_2_acceptance_tests_short_round</a>	N/A	2 mo 0 days (#128)	22 min	
		<a href="#">awramsi_jenkins_installed_software_probe_node_2</a>	12 days (#23)	N/A	10 sec	
		<a href="#">awramsi_jenkins_installed_software_probe_node_3</a>	12 days (#24)	N/A	25 sec	
		<a href="#">awramsi_run_single_acceptance_test</a>	21 hr (#74)	4 days 3 hr (#69)	57 sec	
		<a href="#">awramsi_scratch_job</a>	12 days (#11)	4 mo 27 days (#1)	8.9 sec	
		<a href="#">awramsi_test_measurement_plots</a>	3 mo 27 days (#5)	N/A	0.1 sec	
		<a href="#">awramsi_test_relocatable_virtualenv_install</a>	N/A	2 mo 4 days (#6)	38 min	
		<a href="#">awramsi_X_performance_tracking</a>	2 mo 25 days (#88)	25 days (#147)	24 min	Build periodically: 15 4 * * *

Icon: [S](#) [M](#) [L](#) [Legend](#) [RSS for all](#) [RSS for failures](#) [RSS for ju](#)

[Help us localize this page](#)

Page generated: 21-Oct-2014 14:16:05 [REST API](#) [Jenkins ver. 1.480.3](#)



# Test Driven Development – Continuous Integration

## Jenkins

Jenkins > AWRAMSI > awramsi\_2\_acceptance\_tests\_short\_round

search ? log in

ENABLE AUTO REFRESH

- [Back to Dashboard](#)
- [Status](#)
- [Changes](#)
- [Coverage Report](#)

### Project awramsi\_2\_acceptance\_tests\_short\_round

- [Coverage Report](#)
- [Recent Changes](#)

#### Build History (trend)

- #843 27-Oct-2014 12:27:34
- #842 27-Oct-2014 12:05:04
- #841 24-Oct-2014 12:22:19
- #840 24-Oct-2014 09:33:53
- #839 24-Oct-2014 03:25:25
- #838 23-Oct-2014 17:52:41
- #837 23-Oct-2014 17:30:55
- #836 23-Oct-2014 16:07:50
- #835 23-Oct-2014 15:38:31
- #834 23-Oct-2014 12:37:32
- #833 23-Oct-2014 12:24:54
- #832 23-Oct-2014 10:43:17
- #831 23-Oct-2014 03:27:53
- #830 22-Oct-2014 18:03:58
- #829 22-Oct-2014 17:35:21
- #828 22-Oct-2014 17:20:04
- #827 22-Oct-2014 14:28:20
- #826 22-Oct-2014 11:23:39
- #825 22-Oct-2014 10:35:45
- #824 22-Oct-2014 10:14:15

#### Upstream Projects

- awramsi 1 dev build and test

#### Downstream Projects

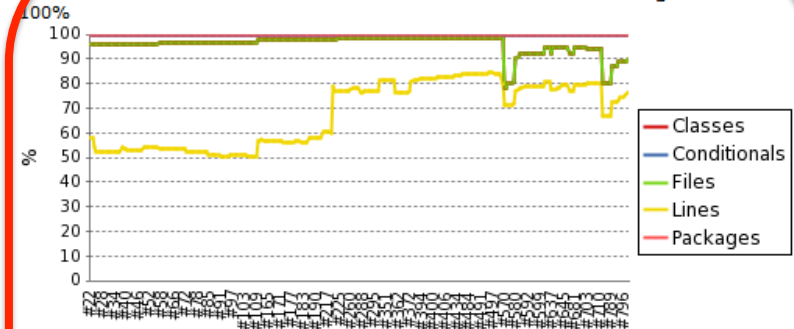
- awramsi 3 deployment

#### Permalinks

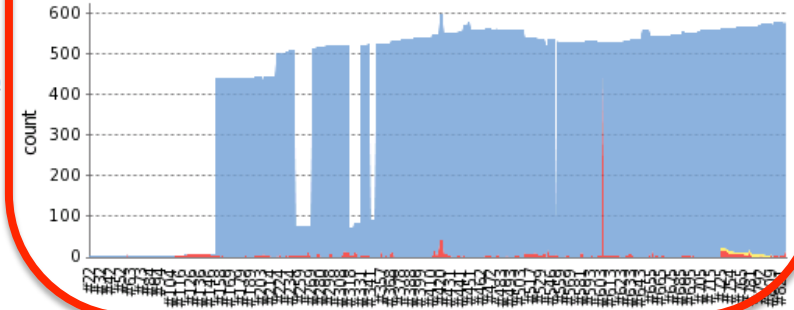
- Last build (#843), 4 min 16 sec ago
- Last stable build (#820), 5 days 20 hr ago
- Last successful build (#820), 5 days 20 hr ago
- Last failed build (#841), 3 days 0 hr ago
- Last unsuccessful build (#842), 26 min ago

#### Code Coverage

Classes 90% Conditionals 100% Files 90% Lines 77% Packages



#### Test Result Trend



(just show failures) enlarge



# Test Driven Development – Acceptance Tests

## IP[y]: Notebook

Notebooks Running Clusters

To import a notebook, drag the file onto the listing below or [click here](#).

New Notebook

/ <b>AcceptanceTests</b> /	
..	
BasicRun.ipynb	Delete
CatchmentRun.ipynb	Delete
ExampleTest.ipynb	Delete
FillGapsWithClimatology.ipynb	Delete
GridToNetCDF.ipynb	Delete
LoadColdStates.ipynb	Delete
LoadHistoricalInitialStates.ipynb	Delete
LoadHistoricalInitialStatesSmallWindow.ipynb	Delete
LoadWiradalInitialStates.ipynb	Delete
MonthlySnapshotStates.ipynb	Delete
PersistentResults.ipynb	Delete
RerunAppend.ipynb	Delete
RunL355.ipynb	Delete
TestCrashOnGappy.ipynb	Delete
TestLogBeforeCrashingOnMissingInputs.ipynb	Delete
TestMatplotlibColorBar.ipynb	Delete
TestSensibleMessageWhenCannotWriteOutput.ipynb	Delete
TestTimeSeriesLimitMatching.ipynb	Delete
VerifyProvenance.ipynb	Delete



# Test Driven Development

IP[y]: Notebook ExampleTest (autosaved)

File Edit View Insert Cell Kernel Help

Markdown Cell Toolbar: None

## Building Acceptance Tests for the AWRAMSI Project

Acceptance tests are built in the IPython notebook and committed to git in the AcceptanceTests directory

**Notes** Don't leave any IPython magics in place when you save and commit. It messes with the conversion to .py scripts

Start by importing everything from test support

```
In [1]: from test_support import *
```

Then, use the expects object (.<tab> to see what's available)

```
In [2]: #expects.should.log.critical.exactly_once("Bad Kitty")
expects.should.fail.with_a(ZeroDivisionError)
```

Then do something!

```
In [3]: 1/0
```

```
-----
ZeroDivisionError                                Traceback (most recent call last)
<ipython-input-3-05c9758a9c21> in <module>()
----> 1 1/0

ZeroDivisionError: integer division or modulo by zero
```

Call ~evaluate()~ to check the result. Should be silent if everything is good. Note: When running on Jenkins, this gets called for you anyway (especially for cases where execution ends with an exception)

```
In [4]: evaluate()
```

**Don't forget to save and commit**



# Test Driven Development

IP[y]: Notebook ExampleTest (unsaved changes)

File Edit View Insert Cell Kernel Help

Cell Toolbar: None

## Building Acceptance Tests for the AWRAMSI Project

Acceptance tests are built in the IPython notebook and committed to git in the AcceptanceTests directory

**Notes** Don't leave any IPython magics in place when you save and commit. It messes with the conversion to .py scripts

Start by importing everything from test support

```
In [1]: from test_support import *
```

```
/data/cwd_awra_data/AWRAMSI/IWRM_0042_MP3/Technical/Common/awramsi/sharedvirtual/.pyenv/virtualenv/lib/python2.7/site-packages/pandas/i
o/excel.py:626: UserWarning: Installed openpyxl is not supported at this time. Use >=1.6.1 and <2.0.0.
  .format(openpyxl_compat.start_ver, openpyxl_compat.stop_ver))
2014-10-25 11:10:13,548 INFO Using settings file from /home/asmith/new/awral/Config/default_user_settings.py
INFO:awrams.awra:Using settings file from /home/asmith/new/awral/Config/default_user_settings.py
2014-10-25 11:10:14,694 INFO Loading parameter set from /mnt/awramsi_test_data/ParameterSets/BestParamSet_v4.5_J.xml for AWRA-L v45
INFO:awrams.awral_helpers:Loading parameter set from /mnt/awramsi_test_data/ParameterSets/BestParamSet_v4.5_J.xml for AWRA-L v45
2014-10-25 11:10:14,755 INFO Loading parameter set from /mnt/awramsi_test_data/ParameterSets/BestParamSet_v4.5_J.xml for AWRA-L v45
INFO:awrams.awral_helpers:Loading parameter set from /mnt/awramsi_test_data/ParameterSets/BestParamSet_v4.5_J.xml for AWRA-L v45
```

Then, use the expects object (. <tab> to see what's available)

```
In [2]: #expects.should.log.critical.exactly_once("Bad Kitty")
expects.should.fail.with_a(ZeroDivisionError)
expects.
expects.should
expects.should_not
```

```
In [3]: 1/0
```

```
-----
ZeroDivisionError                                Traceback (most recent call last)
<ipython-input-3-05c9758a9c21> in <module>()
----> 1 1/0

ZeroDivisionError: integer division or modulo by zero
```

Call ~evaluate()~ to check the result. Should be silent if everything is good. Note: When running on Jenkins, this gets called for you anyway (especially for cases where execution ends with an exception)

```
In [4]: evaluate()
```

**Don't forget to save and commit**



# Test Driven Development

## IP[y]: Notebook

ExampleTest Last Checkpoint: Oct 22 17:52 (unsaved changes)

File Edit View Insert Cell Kernel Help

Code Cell Toolbar: None

### Building Acceptance Tests for the AWRAMSI Project

Acceptance tests are built in the IPython notebook and committed to git in the AcceptanceTests directory

**Notes** Don't leave any IPython magics in place when you save and commit. It messes with the conversion to .py scripts

Start by importing everything from test support

```
In [1]: from test_support import *
```

```
/data/cwd_awra_data/AWRAMSI/IWRM_0042_WP3/Technical/Common/awramsi/sharedvirtual/.pyenv/virtualenv/lib/python2.7/site-packages/pandas  
/io/excel.py:626: UserWarning: Installed openpyxl is not supported at this time. Use >=1.6.1 and <2.0.0.  
.format(openpyxl_compat.start_ver, openpyxl_compat.stop_ver))  
2014-10-25 11:10:13,548 INFO Using settings file from /home/asmith/new/awral/Config/default_user_settings.py  
INFO:awrams.awra:Using settings file from /home/asmith/new/awral/Config/default_user_settings.py  
2014-10-25 11:10:14,694 INFO Loading parameter set from /mnt/awramsi_test_data/ParameterSets/BestParamSet_v4.5_J.xml for AWRA-L v45  
INFO:awrams.awral_helpers:Loading parameter set from /mnt/awramsi_test_data/ParameterSets/BestParamSet_v4.5_J.xml for AWRA-L v45  
2014-10-25 11:10:14,755 INFO Loading parameter set from /mnt/awramsi_test_data/ParameterSets/BestParamSet_v4.5_J.xml for AWRA-L v45  
INFO:awrams.awral_helpers:Loading parameter set from /mnt/awramsi_test_data/ParameterSets/BestParamSet_v4.5_J.xml for AWRA-L v45
```

Then, use the expects object (.<tab> to see what's available)

```
In [2]: #expects.should.log.critical.exactly_once("Bad Kitty")  
expects.should.fail.with_a(ZeroDivisionError)  
expects.should.  
expects.should.fail  
expects.should.log  
expects.should.match_results
```

```
In [3]: 1/0
```

```
-----  
ZeroDivisionError                                Traceback (most recent call last)  
<ipython-input-3-05c9758a9c21> in <module>()  
----> 1 1/0  
  
ZeroDivisionError: integer division or modulo by zero
```

Call ~evaluate()~ to check the result. Should be silent if everything is good. Note: When running on Jenkins, this gets called for you anyway (especially for cases where execution ends with an exception)

```
In [4]: evaluate ()
```

Don't forget to save and commit





# Test Driven Development

IP[y]: Notebook ExampleTest Last Checkpoint: Oct 22 17:52 (unsaved changes)

File Edit View Insert Cell Kernel Help

Code Cell Toolbar: None

## Building Acceptance Tests for the AWRAMSI Project

Acceptance tests are built in the IPython notebook and committed to git in the AcceptanceTests directory

**Notes** Don't leave any IPython magics in place when you save and commit. It messes with the conversion to .py scripts

Start by importing everything from test support

```
In [1]: from test_support import *
```

```
/data/cwd_awra_data/AWRAMSI/IWRM_0042_WP3/Technical/Common/awramsi/sharedvirtual/.pyenv/virtualenv/lib/python2.7/site-packages/pandas  
/io/excel.py:626: UserWarning: Installed openpyxl is not supported at this time. Use >=1.6.1 and <2.0.0.  
.format(openpyxl_compat.start_ver, openpyxl_compat.stop_ver))  
2014-10-25 11:10:13,548 INFO Using settings file from /home/asmith/new/awral/Config/default_user_settings.py  
INFO:awrams.awra:Using settings file from /home/asmith/new/awral/Config/default_user_settings.py  
2014-10-25 11:10:14,694 INFO Loading parameter set from /mnt/awramsi_test_data/ParameterSets/BestParamSet_v4.5_J.xml for AWRA-L v45  
INFO:awrams.awral_helpers:Loading parameter set from /mnt/awramsi_test_data/ParameterSets/BestParamSet_v4.5_J.xml for AWRA-L v45  
2014-10-25 11:10:14,755 INFO Loading parameter set from /mnt/awramsi_test_data/ParameterSets/BestParamSet_v4.5_J.xml for AWRA-L v45  
INFO:awrams.awral_helpers:Loading parameter set from /mnt/awramsi_test_data/ParameterSets/BestParamSet_v4.5_J.xml for AWRA-L v45
```

Then, use the expects object (.<tab> to see what's available)

```
In [2]: #expects.should.log.critical.exactly_once("Bad Kitty")  
expects.should.fail.with_a(ZeroDivisionError)  
expects.should.fail.with_a()
```

```
In [3]: 1/0
```

```
-----  
ZeroDivisionError  
<ipython-input-3-05c9758a9c  
----> 1 1/0
```

```
ZeroDivisionError: integer division or modulo by zero
```

Call ~evaluate()~ to check the result. Should be silent if everything is good. Note: When running on Jenkins, this gets called for you anyway (especially for cases where execution ends with an exception)

```
In [4]: evaluate()
```

**Don't forget to save and commit**



# Test Driven Development

IP[y]: Notebook

ExampleTest Last Checkpoint: Oct 22 17:52 (unsaved changes)

File Edit View Insert Cell Kernel Help

Code Cell Toolbar: None

## Building Acceptance Tests for the AWRAMSI Project

Acceptance tests are built in the IPython notebook and committed to git in the AcceptanceTests directory

**Notes** Don't leave any IPython magics in place when you save and commit. It messes with the conversion to .py scripts

Start by importing everything from test support

```
In [1]: from test_support import *
```

```
/data/cwd_awra_data/AWRAMSI/IWRM_0042_WP3/Technical/Common/awramsi/sharedvirtual/.pyenv/virtualenv/lib/python2.7/site-packages/pandas  
/io/excel.py:626: UserWarning: Installed openpyxl is not supported at this time. Use >=1.6.1 and <2.0.0.  
.format(openpyxl_compat.start_ver, openpyxl_compat.stop_ver))  
2014-10-25 11:10:13,548 INFO Using settings file from /home/asmith/new/awral/Config/default_user_settings.py  
INFO:awrams.awra:Using settings file from /home/asmith/new/awral/Config/default_user_settings.py  
2014-10-25 11:10:14,694 INFO Loading parameter set from /mnt/awramsi_test_data/ParameterSets/BestParamSet_v4.5_J.xml for AWRA-L v45  
INFO:awrams.awral_helpers:Loading parameter set from /mnt/awramsi_test_data/ParameterSets/BestParamSet_v4.5_J.xml for AWRA-L v45  
2014-10-25 11:10:14,755 INFO Loading parameter set from /mnt/awramsi_test_data/ParameterSets/BestParamSet_v4.5_J.xml for AWRA-L v45  
INFO:awrams.awral_helpers:Loading parameter set from /mnt/awramsi_test_data/ParameterSets/BestParamSet_v4.5_J.xml for AWRA-L v45
```

Then, use the expects object (.<tab> to see what's available)

```
In [2]: #expects.should.log.critical.exactly_once("Bad Kitty")  
expects.should.fail.with_a(ZeroDivisionError)  
expects.should.log.  
expects.should.log.critical  
expects.should.log.error  
expects.should.log.info  
expects.should.log.warning
```

```
In [3]:
```

```
-----  
ZeroDivisionError Traceback (most recent call last)  
<ipython-input-3-05c9758a9c21> in <module>()  
----> 1 1/0  
  
ZeroDivisionError: integer division or modulo by zero
```

Call ~evaluate()~ to check the result. Should be silent if everything is good. Note: When running on Jenkins, this gets called for you anyway (especially for cases where execution ends with an exception)

```
In [4]: evaluate ()
```

**Don't forget to save and commit**



# Test Driven Development

IP[y]: Notebook ExampleTest Last Checkpoint: Oct 22 17:52 (unsaved changes)

File Edit View Insert Cell Kernel Help

Code Cell Toolbar: None

## Building Acceptance Tests for the AWRAMSI Project

Acceptance tests are built in the IPython notebook and committed to git in the AcceptanceTests directory

**Notes** Don't leave any IPython magics in place when you save and commit. It messes with the conversion to .py scripts

Start by importing everything from test support

```
In [1]: from test_support import *
```

```
/data/cwd_awra_data/AWRAMSI/IWRM_0042_WF3/Technical/Common/awramsi/sharedvirtual/.pyenv/virtualenv/lib/python2.7/site-packages/pandas  
/io/excel.py:626: UserWarning: Installed openpyxl is not supported at this time. Use >=1.6.1 and <2.0.0.  
.format(openpyxl_compat.start_ver, openpyxl_compat.stop_ver))  
2014-10-25 11:10:13,548 INFO Using settings file from /home/asmith/new/awral/Config/default_user_settings.py  
INFO:awrams.awra:Using settings file from /home/asmith/new/awral/Config/default_user_settings.py  
2014-10-25 11:10:14,694 INFO Loading parameter set from /mnt/awramsi_test_data/ParameterSets/BestParamSet_v4.5_J.xml for AWRA-L v45  
INFO:awrams.awral_helpers:Loading parameter set from /mnt/awramsi_test_data/ParameterSets/BestParamSet_v4.5_J.xml for AWRA-L v45  
2014-10-25 11:10:14,755 INFO Loading parameter set from /mnt/awramsi_test_data/ParameterSets/BestParamSet_v4.5_J.xml for AWRA-L v45  
INFO:awrams.awral_helpers:Loading parameter set from /mnt/awramsi_test_data/ParameterSets/BestParamSet_v4.5_J.xml for AWRA-L v45
```

Then, use the expects object (.<tab> to see what's available)

```
In [2]: #expects.should.log.critical.exactly_once("Bad Kitty")  
expects.should.fail.with_a(ZeroDivisionError)  
expects.should.log.critical.  
expects.should.log.critical.at_least_once  
expects.should.log.critical.exactly  
expects.should.log.critical.exactly_once
```

```
In [3]: 1/0
```

```
-----  
ZeroDivisionError Traceback (most recent call last)  
<ipython-input-3-05c9758a9c21> in <module>()  
----> 1 1/0
```

ZeroDivisionError: integer division or modulo by zero

Call ~evaluate()~ to check the result. Should be silent if everything is good. Note: When running on Jenkins, this gets called for you anyway (especially for cases where execution ends with an exception)

```
In [4]: evaluate()
```

**Don't forget to save and commit**



# Test Driven Development

IP[y]: Notebook ExampleTest Last Checkpoint: Oct 22 17:52 (unsaved changes)

File Edit View Insert Cell Kernel Help

Code Cell Toolbar: None

## Building Acceptance Tests for the AWRAMSI Project

Acceptance tests are built in the IPython notebook and committed to git in the AcceptanceTests directory

**Notes** Don't leave any IPython magics in place when you save and commit. It messes with the conversion to .py scripts

Start by importing everything from test support

```
In [1]: from test_support import *
```

```
/data/cwd_awra_data/AWRAMSI/IWRM_0042_WP3/Technical/Common/awramsi/sharedvirtual/.pyenv/virtualenv/lib/python2.7/site-packages/pandas  
/io/excel.py:626: UserWarning: Installed openpyxl is not supported at this time. Use >=1.6.1 and <2.0.0.  
.format(openpyxl_compat.start_ver, openpyxl_compat.stop_ver)  
2014-10-25 11:10:13,548 INFO Using settings file from /home/asmith/new/awral/Config/default_user_settings.py  
INFO:awrams.awra:Using settings file from /home/asmith/new/awral/Config/default_user_settings.py  
2014-10-25 11:10:14,694 INFO Loading parameter set from /mnt/awramsi_test_data/ParameterSets/BestParamSet_v4.5_J.xml for AWRA-L v45  
INFO:awrams.awral_helpers:Loading parameter set from /mnt/awramsi_test_data/ParameterSets/BestParamSet_v4.5_J.xml for AWRA-L v45  
2014-10-25 11:10:14,755 INFO Loading parameter set from /mnt/awramsi_test_data/ParameterSets/BestParamSet_v4.5_J.xml for AWRA-L v45  
INFO:awrams.awral_helpers:Loading parameter set from /mnt/awramsi_test_data/ParameterSets/BestParamSet_v4.5_J.xml for AWRA-L v45
```

Then, use the expects object (.<tab> to see what's available)

```
In [2]: #expects.should.log.critical.exactly_once("Bad Kitty")  
expects.should.fail.with_a(ZeroDivisionError)  
expects.should.match_results.  
expects.should.match_results.la1_avg  
expects.should.match_results.loaded_from  
expects.should.match_results.mbal_avg  
expects.should.match_results.mleaf_dr  
expects.should.match_results.mleaf_sr  
expects.should.match_results.qgtot_avg  
expects.should.match_results.qiftot_avg  
expects.should.match_results.qrtot_avg  
expects.should.match_results.qtot_avg  
expects.should.match_results.s0_avg
```

```
In [3]:
```

```
ZeroDivisionError: integer division or modulo by zero
```

Call ~evaluate()~ to check the result. Should be silent if everything is good. Note: When running on Jenkins, this gets called for you anyway (especially for cases where execution ends with an exception)

```
In [4]: evaluate()
```

**Don't forget to save and commit**



Australian Government  
Bureau of Meteorology

# AWRA Modelling System Modes Of Operation

## 1. Interactive

- Simulation runs of AWRA-L and AWRA-R over arbitrary regions and time periods with ability to switch outputs, inputs, parameters and initial states
- Visualisation of maps and timeseries with arbitrary aggregation
- Benchmarking of AWRA-L and AWRA-R runs against observations

## 2. Scheduled Run

- Outputs generated daily for 1 January 1911 to yesterday
- Shared internally to Bureau of Meteorology via THREDDS
- Soon shared to external parties and available on NCI via RDSI
- May soon underpin a Bureau of Meteorology soil moisture website

## 3. Calibration

- Fitting AWRA-L and AWRA-R models to observations (streamflow, soil moisture and ET)



**Australian Government**

**Bureau of Meteorology**

---

Thank you...

Adam Smith

03 9669 4606

[Adam.Smith@bom.gov.au](mailto:Adam.Smith@bom.gov.au)